

Vigas			
Nome	Seção (cm)	Elevação (cm)	Nível (cm)
VR1	15x30	0	295
VR2	15x30	0	295
VR3	15x30	0	295
VR4	15x30	0	295
VR5	15x30	0	295
VR6	15x30	0	295

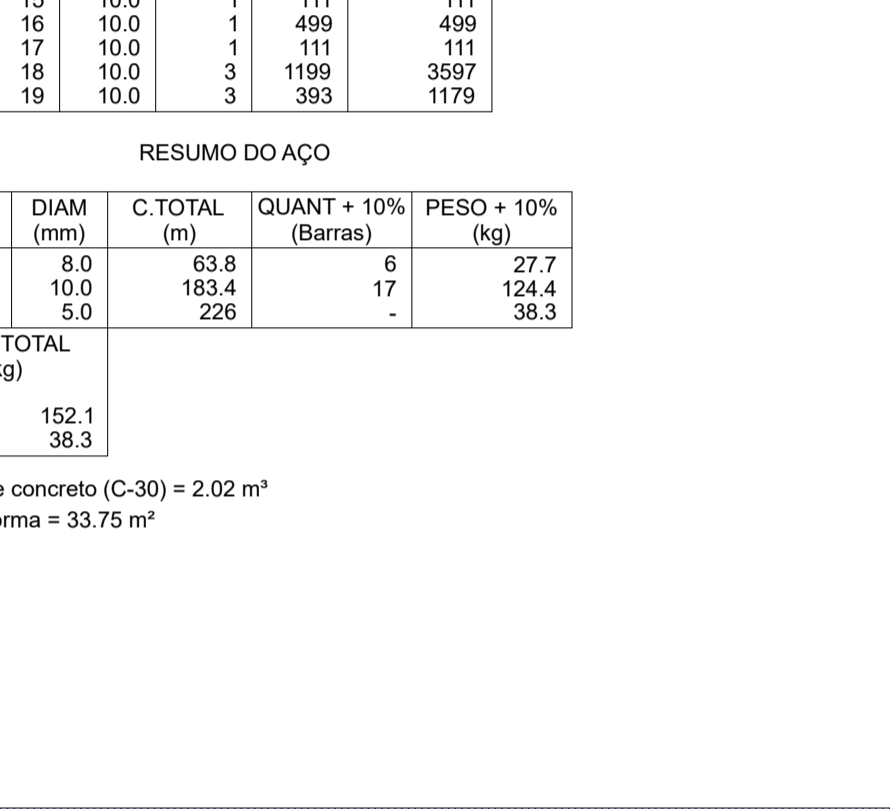
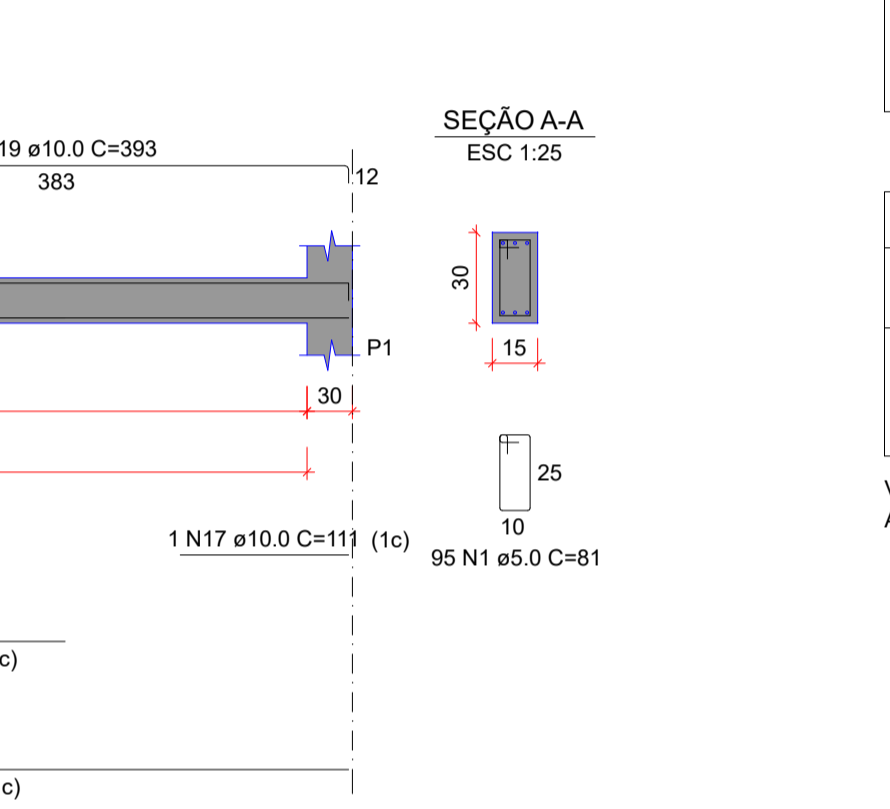
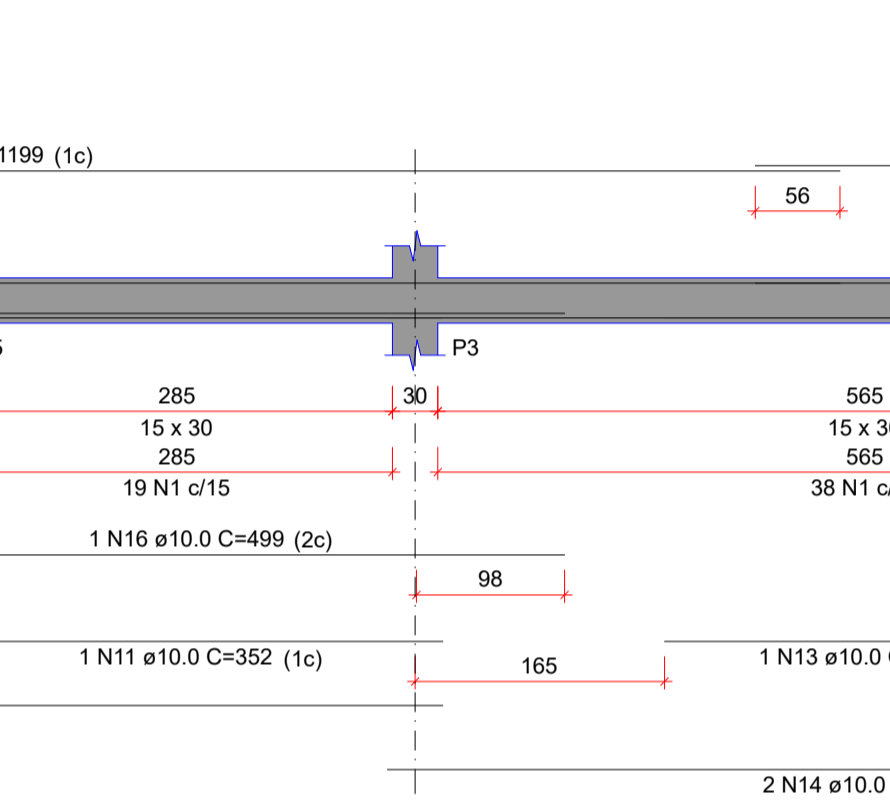
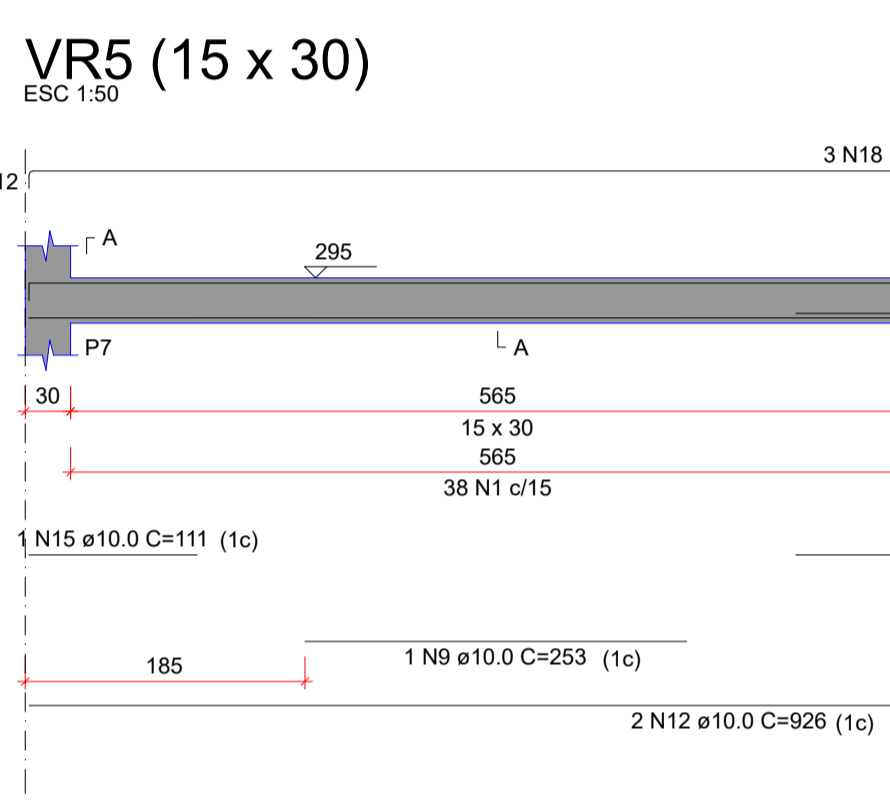
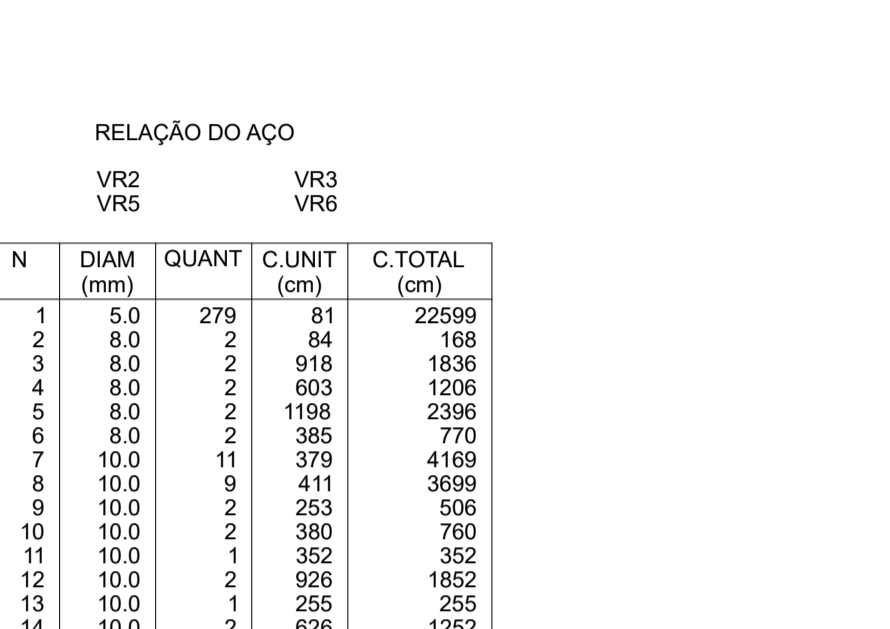
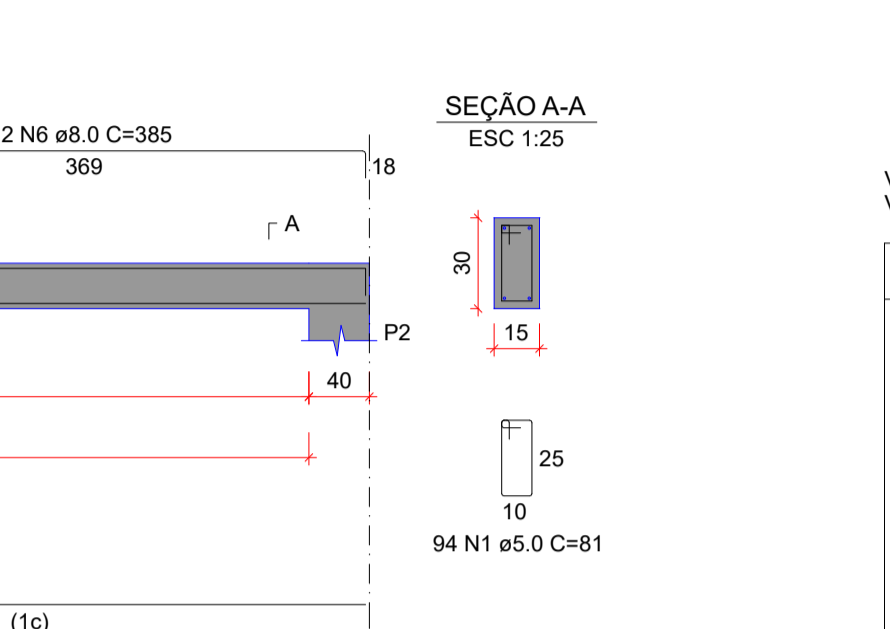
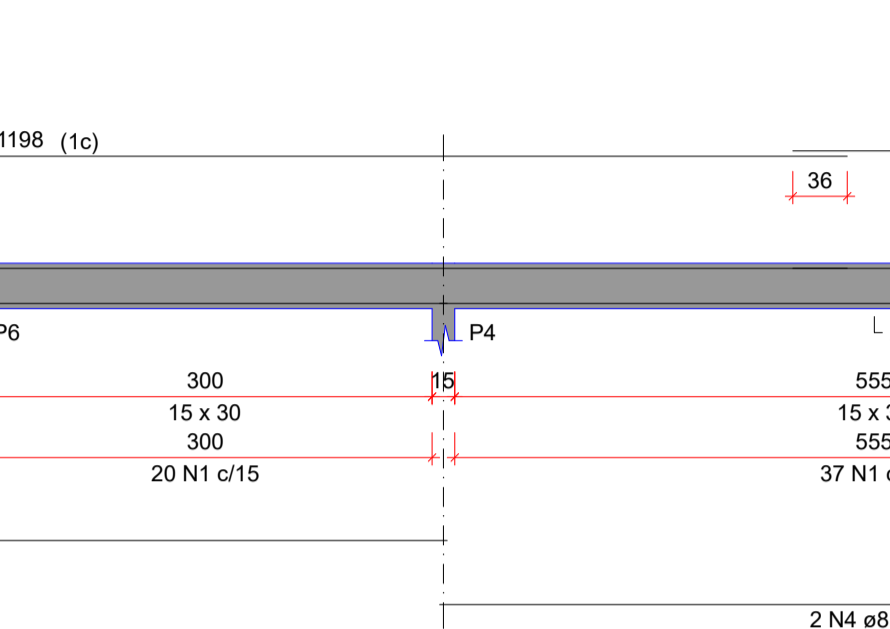
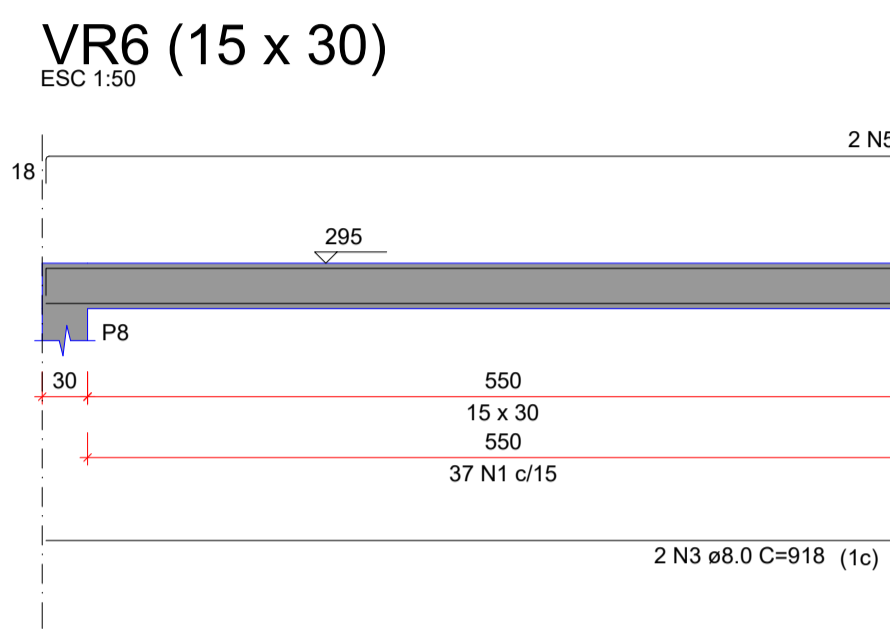
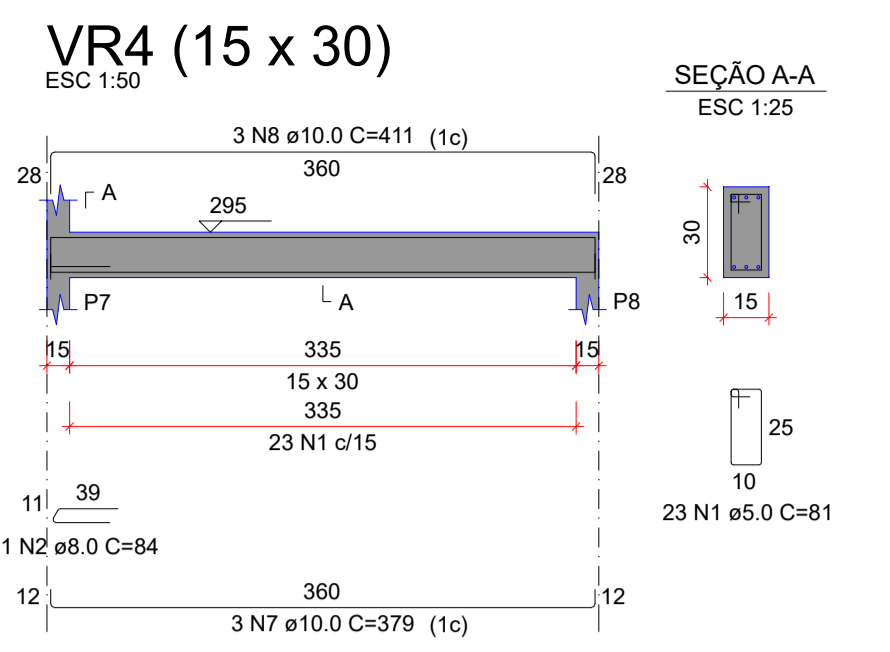
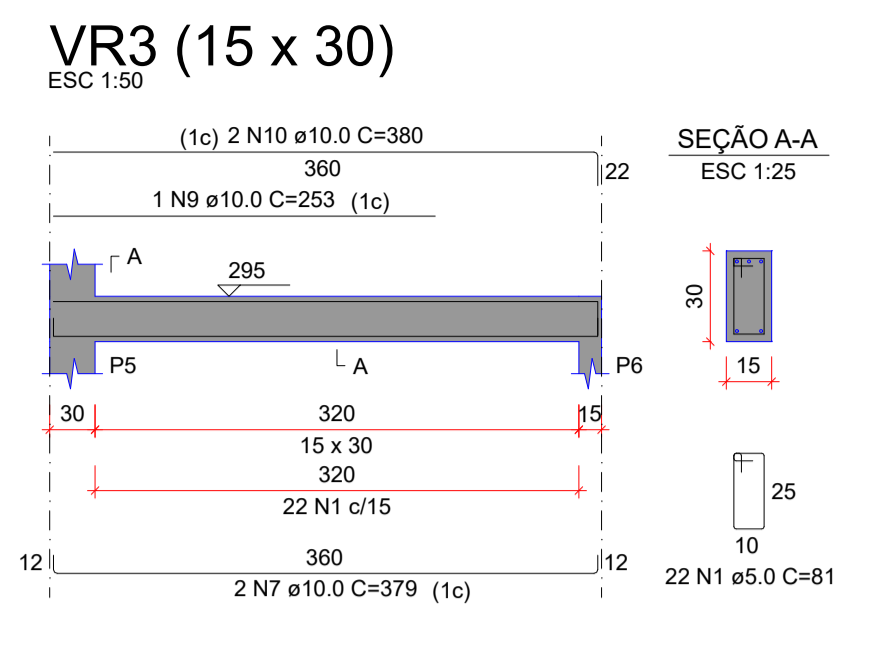
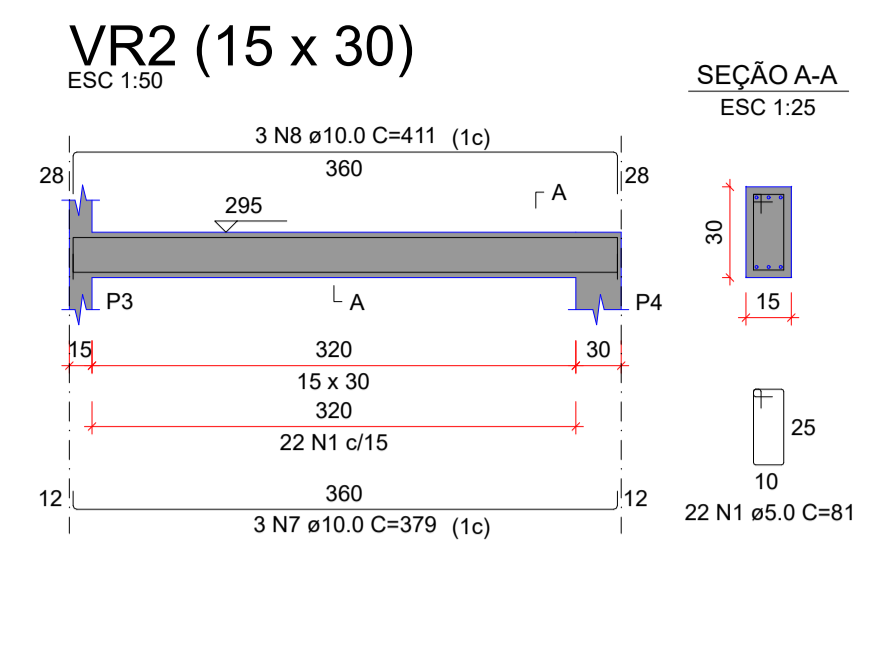
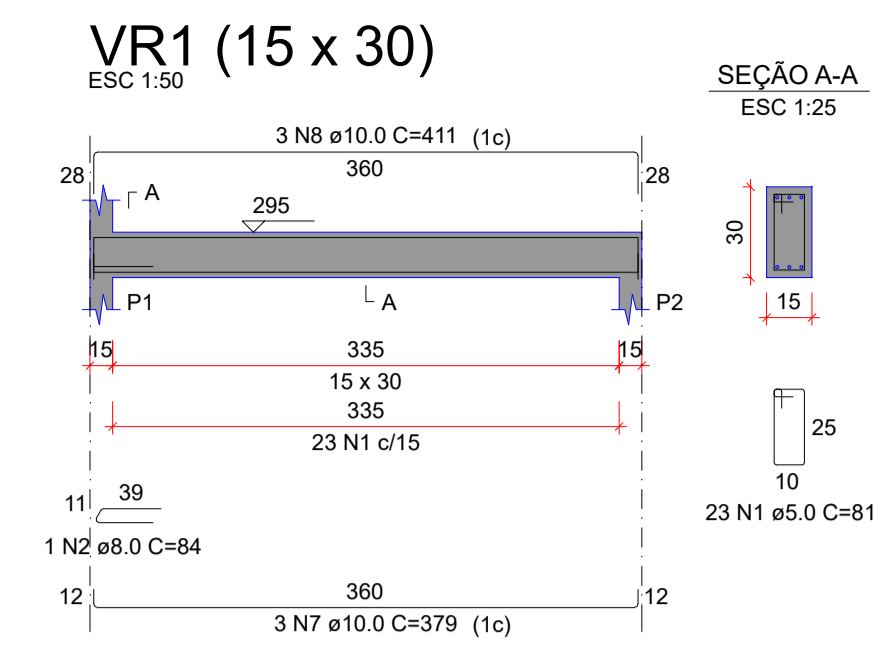
Características dos materiais		
fck	Ecs	
(kgf/cm ²)	(kgf/cm ²)	
300	268384	

Dimensão máxima do agregado = 19 mm

Pilares			
Nome	Seção (cm)	Elevação (cm)	Nível (cm)
P1	15x30	0	295
P2	15x40	0	295
P3	15x30	0	295
P4	15x30	0	295
P5	15x30	0	295
P6	15x30	0	295
P7	15x30	0	295
P8	15x30	0	295

Legenda dos pilares	
	Pilar que morre
	Pilar que passa

Legenda das vigas e paredes	
	Viga



RELAÇÃO DO AÇO

AÇO	N	DIAM (mm)	QUANT	C.UNIT (cm)	C.TOTAL (cm)
CA60	1	5.0	279	81	22599
CA50	2	8.0	2	84	168
	3	8.0	2	918	1836
	4	8.0	2	603	1206
	5	8.0	2	1198	2396
	6	8.0	2	335	770
	7	10.0	11	379	4169
	8	10.0	9	411	3699
	9	10.0	2	253	506
	10	10.0	2	380	760
	11	10.0	1	352	352
	12	10.0	2	926	1852
	13	10.0	1	255	255
	14	10.0	2	626	1252
	15	10.0	1	111	111
	16	10.0	1	499	499
	17	10.0	1	111	111
	18	10.0	3	1199	3597
	19	10.0	3	393	1179

RESUMO DO AÇO

AÇO	DIAM (mm)	C. TOTAL (m)	QUANT + 10% (Barras)	PESO + 10% (kg)
CA50	8.0	63.8	6	27.7
CA60	10.0	183.4	17	124.4
	5.0	226	-	38.3

PESO TOTAL (kg)
CA50 152.1
CA60 38.3

Volume de concreto (C-30) = 2.02 m³
Área de forma = 33.75 m²

Forma do pavimento RESPALDO (Nível 295)
escala 1:50

CARIMBOS:



Prefeitura Municipal de Sorriso
ESTADO DE MATO GROSSO
Gestão 2021/2024

PROJETO:

ESCOLA MUNICIPAL SANTA MARIA

DETALHES:

**ESTRUTURAL BANHEIROS QUADRA POLIESPORTIVA
FORMA RESPALDO E VIGAS RESPALDO**

<p>OBRAS:</p> <p>ESCOLA MUNICIPAL SANTA MARIA</p> <p>LOCAL:</p> <p>PROJEÇÃO DA AVENIDA ARAGUAIA GLEBA - RESERVA ESCOLAR, ÁREA MUNICIPAL BAIRRO SANTA MARIA, SORRISO - MT.</p>	<p>FOLHA:</p> <h1 style="font-size: 2em;">04/05</h1>
---	--

<p>AUTOR DO PROJETO:</p> <p style="text-align: center;">CAMILA DIEI BOBRZYK <small>Engenheira Civil CREA - MT023305</small></p>	<p>VISTO:</p> <p style="text-align: center;">EDNILSON DE LIMA OLIVEIRA <small>SECRETARIO DA CIDADE</small></p>
---	--

<p>ÁREAS:</p>	<p>PROPRIETÁRIO:</p> <p style="text-align: center;">Prefeitura Municipal de Sorriso <small>CNPJ: 03.239.076/0001-62</small></p>
---------------	--

<p>DATA:</p> <p style="text-align: center;">MAIO/2022</p>	<p>ESCALA:</p> <p style="text-align: center;">INDICADAS</p>	<p>DESENHO:</p>
--	--	-----------------