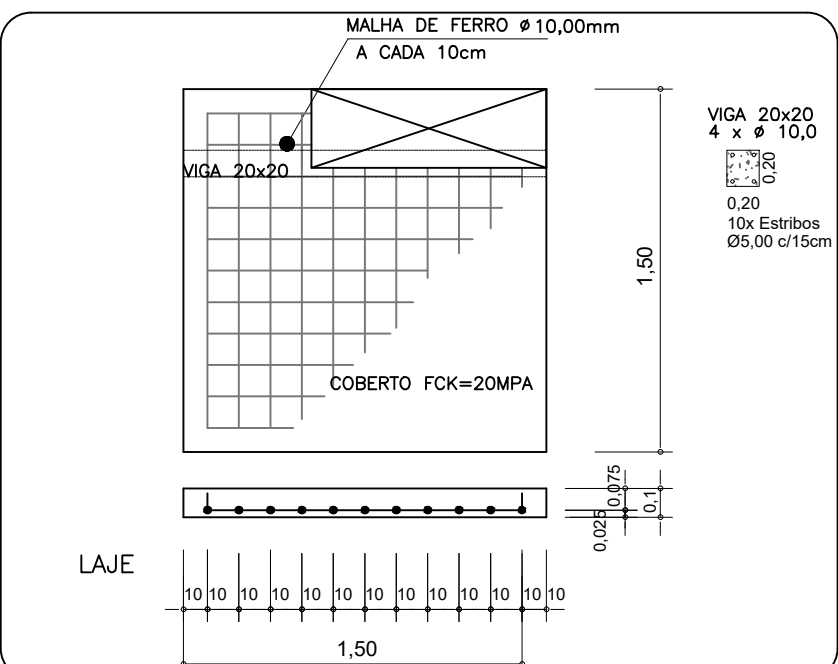
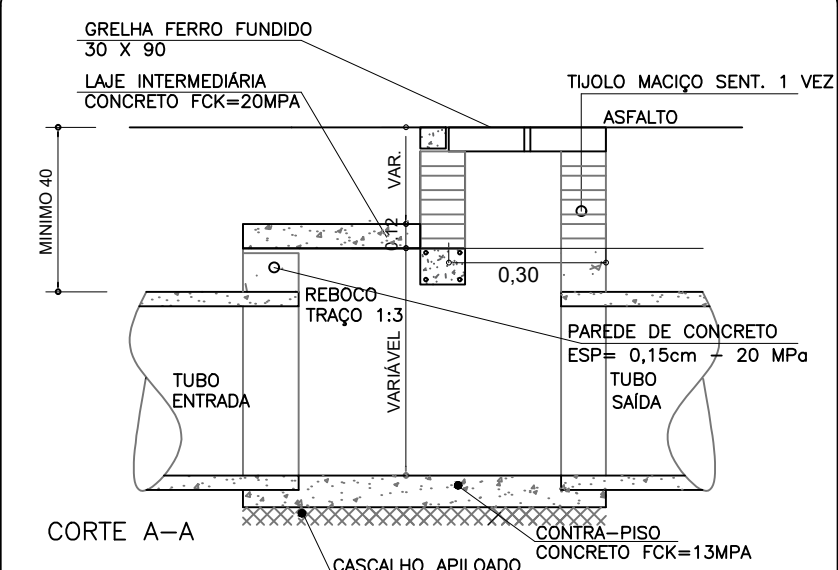
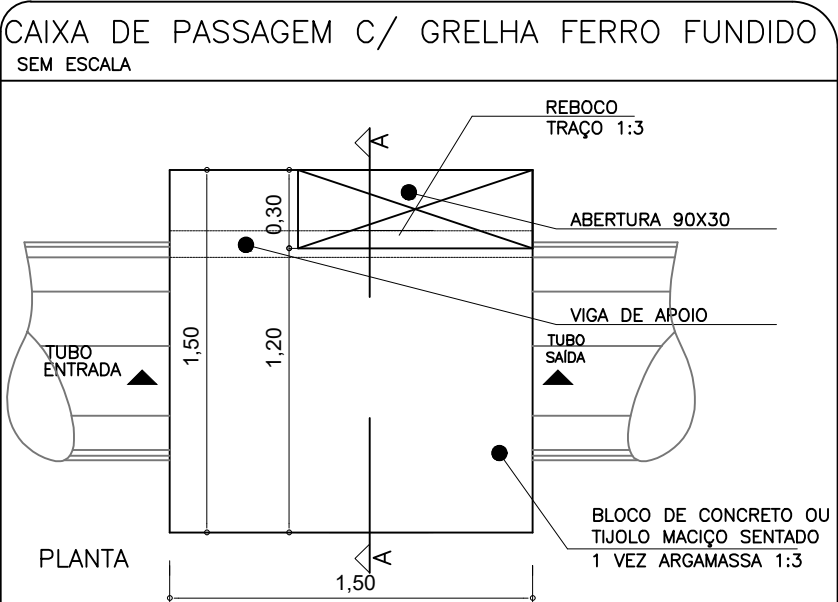


The technical drawing illustrates the design of a manhole structure with the following components and dimensions:

- Planta Baixa (Plan View):** Shows the top-down layout of the manhole. It features a central circular opening with a diameter of 0.40m. The inner structure has a width of 3.00m and a height of 3.80m. The outer concrete structure has a total width of 3.80m and a height of 3.80m. The structure is supported by a base of 0.40m. The material is labeled as CONCRETO fck=20 MPa. The structure is shown with a central vertical pipe labeled TUBO SAÍDA and a horizontal pipe labeled TUBO ENTRADA. The structure is surrounded by a layer of LASTRO (bitumen) and a layer of BO. RADA (radar) on the left side.
- Corte AA' (Section AA'):** Shows a cross-section of the manhole. The structure is composed of CONCRETO ARMADO fck=20 MPa. The total height is 3.80m. The structure is supported by a base of 0.40m. The material is labeled as CONCRETO fck=20 MPa. The structure is shown with a central vertical pipe labeled TUBO SAÍDA and a horizontal pipe labeled TUBO ENTRADA. The structure is surrounded by a layer of LASTRO and a layer of BO. RADA on the left side.
- Corte BB' (Section BB'):** Shows a cross-section of the manhole. The structure is composed of CONCRETO fck=20 MPa. The total height is 3.80m. The structure is supported by a base of 0.40m. The material is labeled as CONCRETO fck=20 MPa. The structure is shown with a central vertical pipe labeled TUBO SAÍDA and a horizontal pipe labeled TUBO ENTRADA. The structure is surrounded by a layer of LASTRO and a layer of BO. RADA on the left side.

Ø	N1				N2			
	QUANT.	DIÂM.	COMP.	ESPAÇ.	QUANT.	DIÂM.	COMP.	ESPAÇ.
40	11	6,3	95	20	8	4,0	185	15
60	11	6,3	95	20	8	4,0	185	15
80	11	6,3	125	20	14	4,0	185	10
100	14	6,3	145	15	16	4,0	185	10
120	17	6,3	165	12,5	10	6,3	185	20
150	17	6,3	195	12,5	17	6,3	185	12,5

DIMENSÃO E QUANTIDADE S APROXIMADAS PARA UMA UNIDADE									
CÓDIGO	DIMENSÕES						QUANTIDADES		
	D	L	a	b	h	H	FORMAS (m²)	ACO (kg)	CONCRETO (m³)
CAIXAS SEM DISPOSITIVO INTERNO DE QUEBRADA									
CLP01	40	60	20	100	80	80	11,93	4,1	1,410
CLP02	60	100	20	150	80	80	11,93	4,1	1,360
CLP03	80	150	25	130	100	100	16,57	6,0	1,940
CLP04	100	100	25	150	130	130	20,57	8,0	2,440
CLP05	120	120	25	170	150	150	24,65	11,6	2,820
CLP06	150	150	25	200	180	180	32,70	16,2	3,410



The drawing consists of three main views of a manhole structure:

- Planta Baixa (Plan View):** Shows the top-down layout of the manhole. It includes a central circular opening with a diameter of $\varnothing 0.80 \text{ m}$. The structure is surrounded by a concrete collar (COLAR DE CONCRETO) with a thickness of 0.40 m. The total width of the structure is 3.80 m, and the total height is 3.00 m. The structure is supported by a base layer (LASTRO) and a compacted ground layer (TERRENO COMPACTADO 100% PROCTOR NORMAL). The structure is surrounded by a concrete collar (COLAR DE CONCRETO) with a thickness of 0.40 m. The total width of the structure is 3.80 m, and the total height is 3.00 m.
- Corte BB' (Section View):** Shows a cross-section of the manhole. It includes a central circular opening with a diameter of $\varnothing 0.80 \text{ m}$. The structure is surrounded by a concrete collar (COLAR DE CONCRETO) with a thickness of 0.40 m. The total height of the structure is 3.00 m. The structure is supported by a base layer (LASTRO) and a compacted ground layer (TERRENO COMPACTADO 100% PROCTOR NORMAL). The structure is surrounded by a concrete collar (COLAR DE CONCRETO) with a thickness of 0.40 m. The total height of the structure is 3.00 m.
- Tampa do Póço de Visita (Top View of the Access Cover):** Shows the top view of the access cover. It includes a central circular opening with a diameter of $\varnothing 0.80 \text{ m}$. The structure is surrounded by a concrete collar (COLAR DE CONCRETO) with a thickness of 0.40 m. The total width of the structure is 3.80 m, and the total height is 3.00 m. The structure is supported by a base layer (LASTRO) and a compacted ground layer (TERRENO COMPACTADO 100% PROCTOR NORMAL). The structure is surrounded by a concrete collar (COLAR DE CONCRETO) with a thickness of 0.40 m. The total width of the structure is 3.80 m, and the total height is 3.00 m.

Ø	N1								
	N1	N2	N3	N4	N5	N6	N7	N8	N9
40	6,3 c/15	-	-	6,3 c/15	3 Ø 12,5	-	3 Ø 12,5	4 Ø 6,3	12 Ø 10
60	6,3 c/15	-	-	6,3 c/15	3 Ø 12,5	-	3 Ø 12,5	4 Ø 6,3	12 Ø 10
80	6,3 c/15	-	-	6,3 c/15	3 Ø 12,5	-	3 Ø 12,5	4 Ø 6,3	12 Ø 10
100	6,3 c/15	-	-	6,3 c/15	3 Ø 12,5	-	3 Ø 12,5	4 Ø 6,3	12 Ø 10
120	6,3 c/15	4,0 c/12,5	6,3 c/20	6,3 c/15	3 Ø 12,5	4 Ø 10,0	3 Ø 12,5	5 Ø 6,3	12 Ø 10
150	6,3 c/15	6,3 c/15	6,3 c/15	4,0 c/15	3 Ø 12,5	5 Ø 10,0	3 Ø 12,5	6 Ø 8,0	12 Ø 10

DIMENSÃO E S QUANTIDADE S APROXIMADAS PARA UMA UNIDADE										
CÓDIGO	DIMENSÕES						QUANTIDADES			
	D	a	b	c	h	H	L	FORMAS (m²)	ACO (kg)	CONCRETO (m³)
POÇO DE VISITA SEM DISPOSITIVO INTERNO DE QUEDA										
PVI 01	40	20	130	25	80	80	90	15,05	17,0	1,740
PVI 02	60	20	130	15	80	80	90	15,05	17,0	1,670
PVI 03	80	25	140	5	100	100	90	16,63	17,5	2,080
PVI 04	100	25	-	-	130	130	100	22,39	22,9	2,480
PVI 05	120	25	170	-	150	150	120	23,62	25,7	2,890
PVI 06	150	25	200	-	180	180	150	30,39	31,6	3,500

OBRA:

PROJETO:

ENDEREÇO:

AVENIDA PERIMETRAL SUDOESTE ESQUINA COM RUA LA PAZ -
ZONA DE INTERESSE INSTITUCIONAL (ZII) + (ZCT3) - ÁREA 03
MATRÍCULA Nº 25610

SORRISO-MT

FOLHA:

05/07

RESPONSÁVEL TÉCNICO:

Silvia Romfim
Engenheira Civil CREA - MT 026160

VISTO:

Ednilson de Lima Oliveira
Secretario da cidade

ÁREAS:

ÁREA DO LOTE 270m²
ÁREA PARA CALCULO ESTRUTURAL 218,78m²

PROPRIETÁRIO:

Prefeitura Municipal de Sorriso
CNPJ: 03.239.076/0001-62

DATA:

Novembro / 2021

ESCALA:

INDICADAS

DESENHO:

—

ARQUIVO:

REV.001