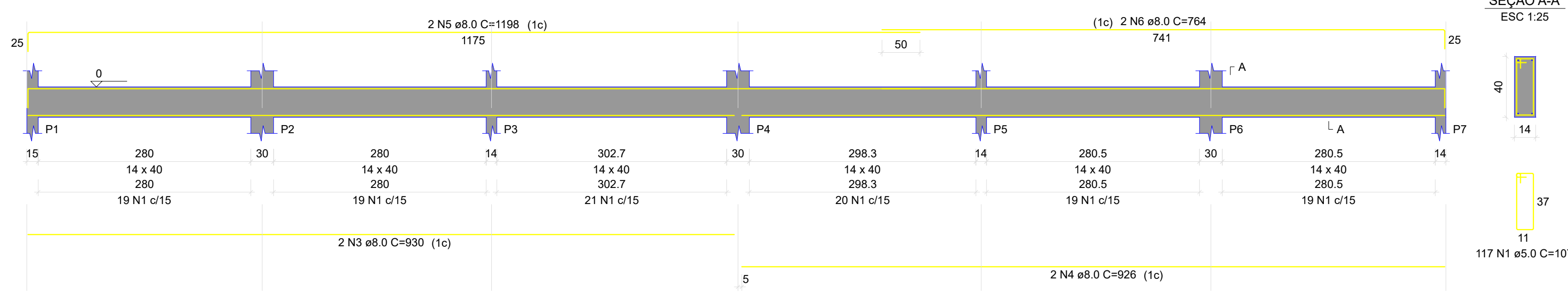
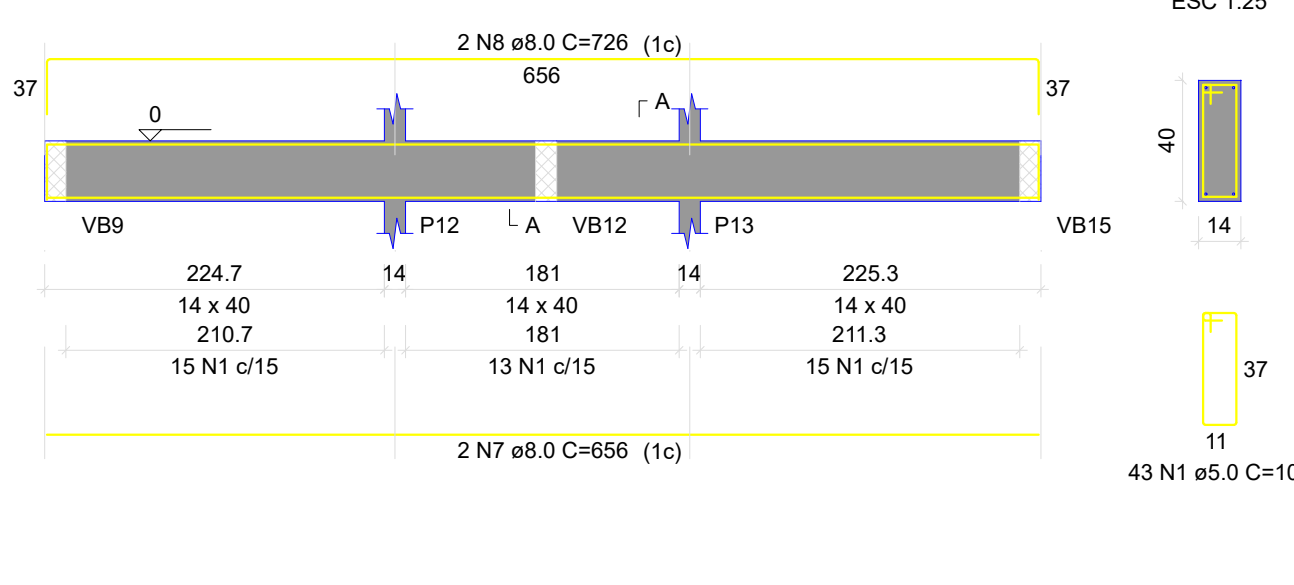


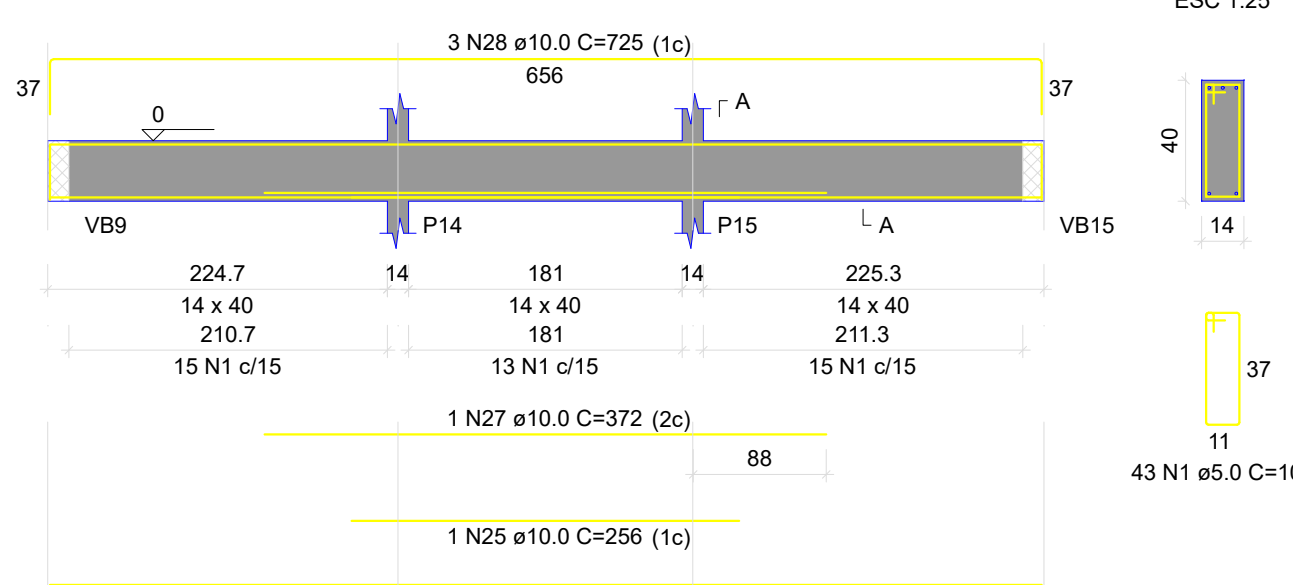
**VB1 (14 x 40)**



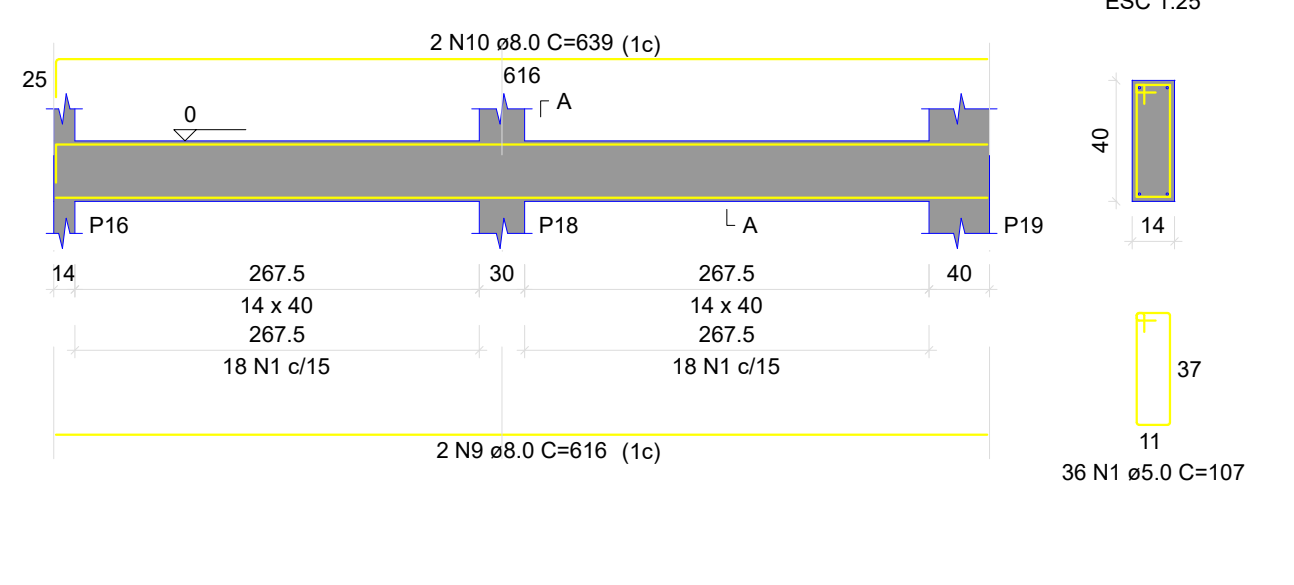
**VB2 (14 x 40)**



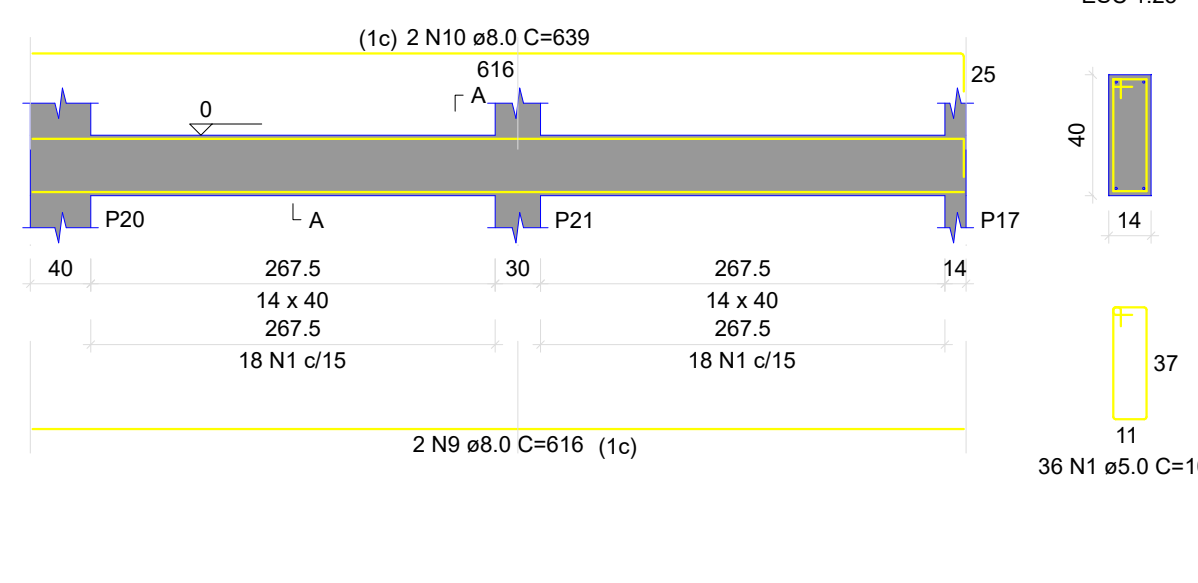
**VB3 (14 x 40)**



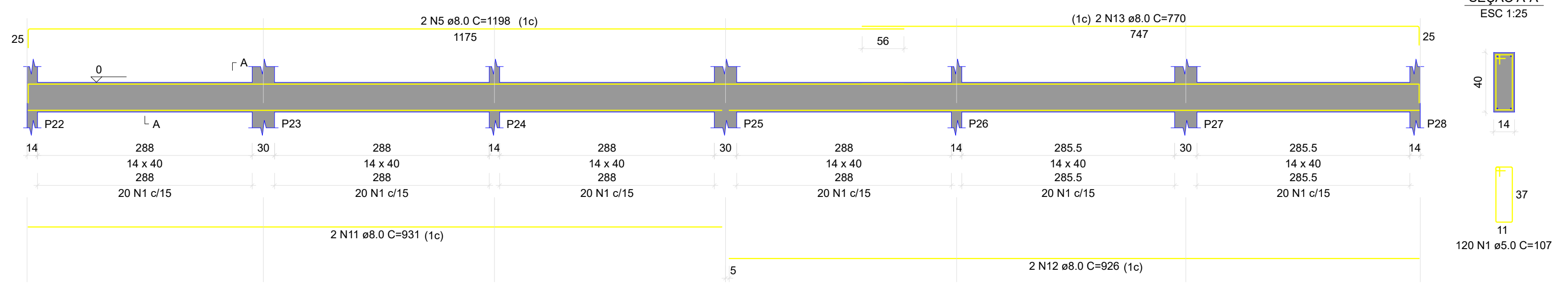
**VB4 (14 x 40)**



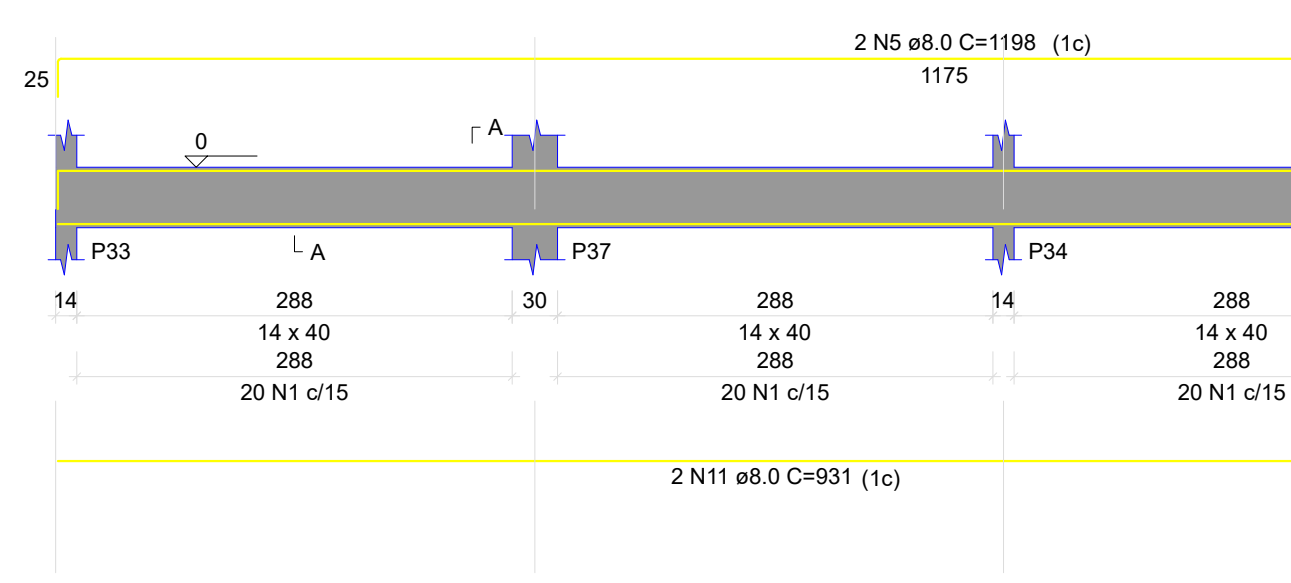
**VB5 (14 x 40)**



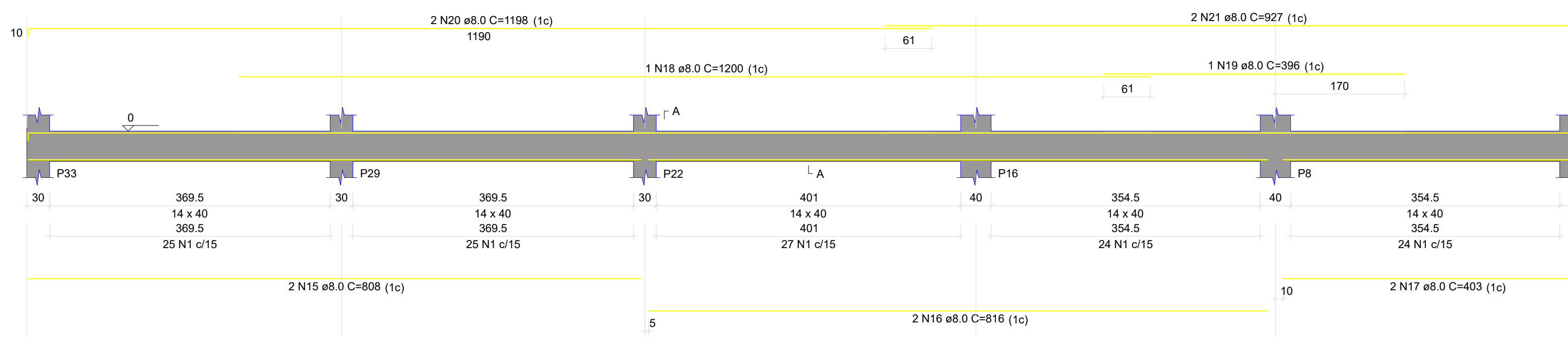
**VB6 (14 x 40)**



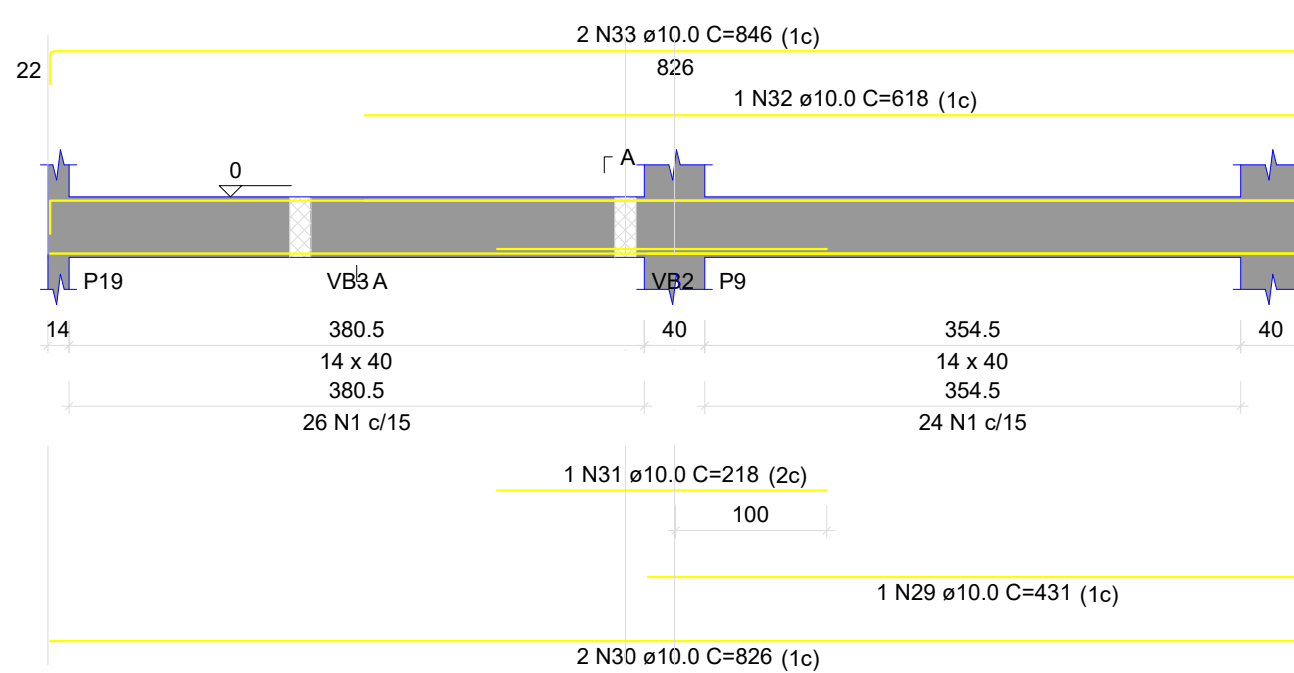
**VB7 (14 x 40)**



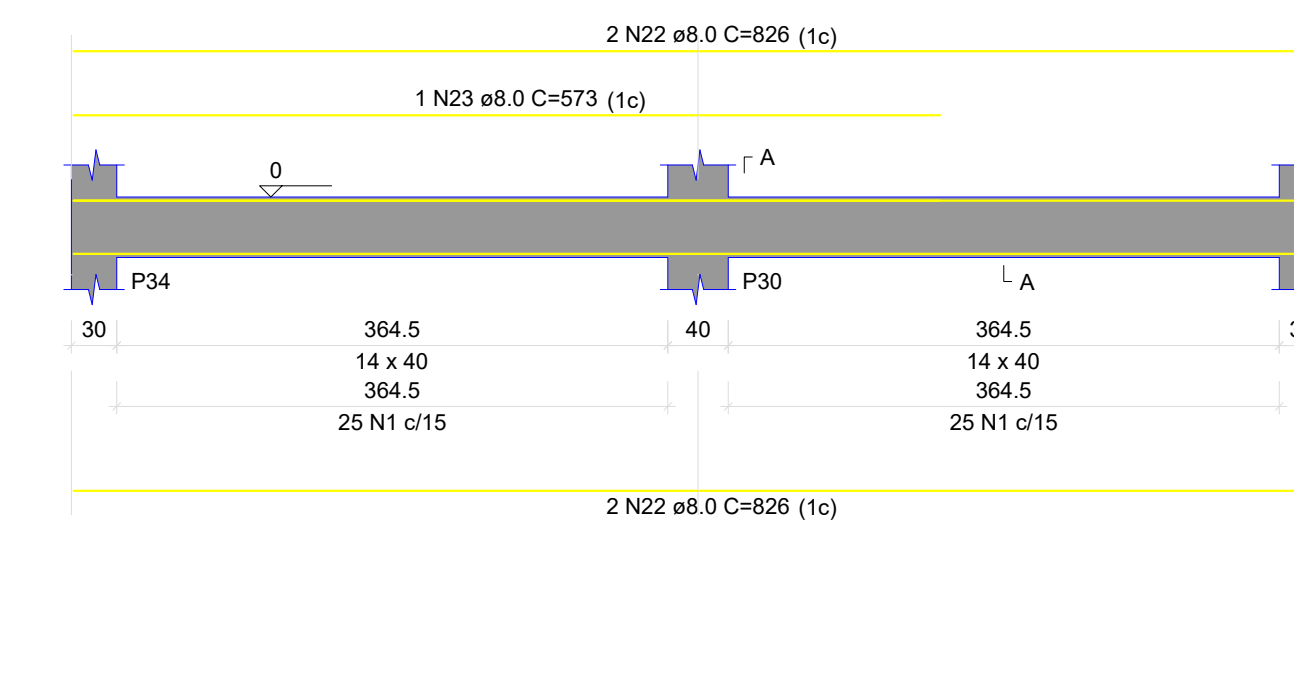
**VB8 (14 x 40)**



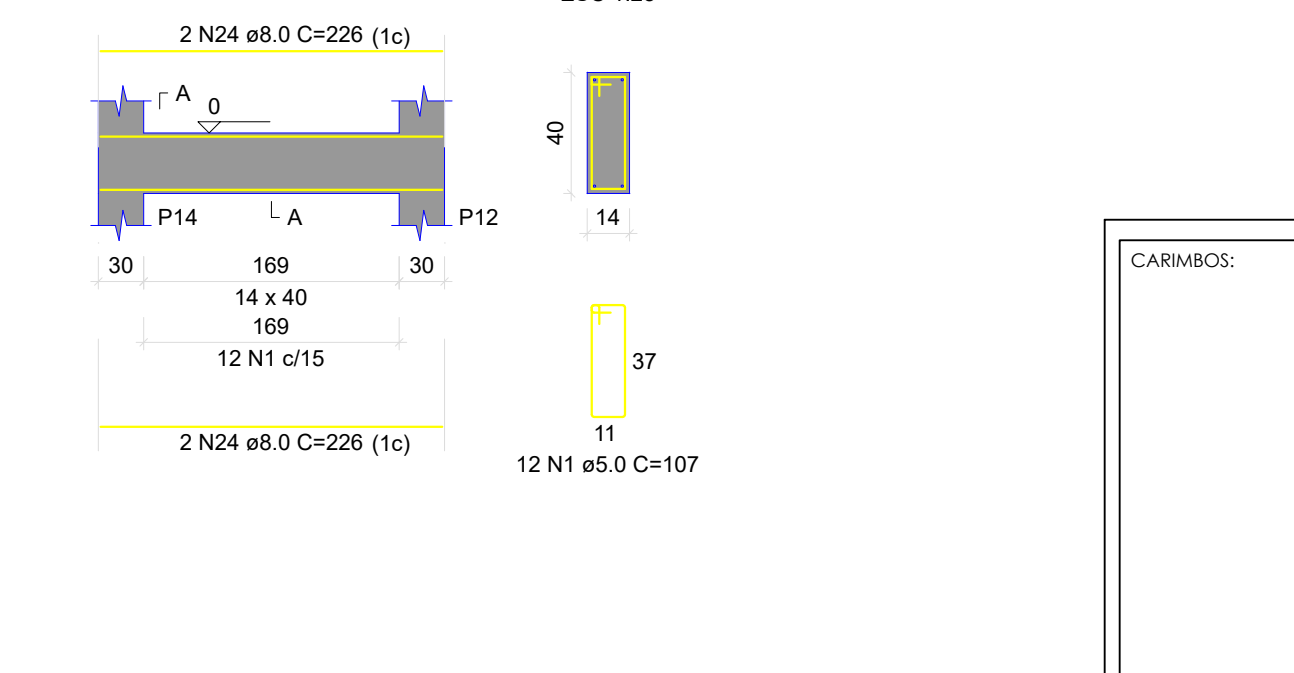
**VB9 (14 x 40)**



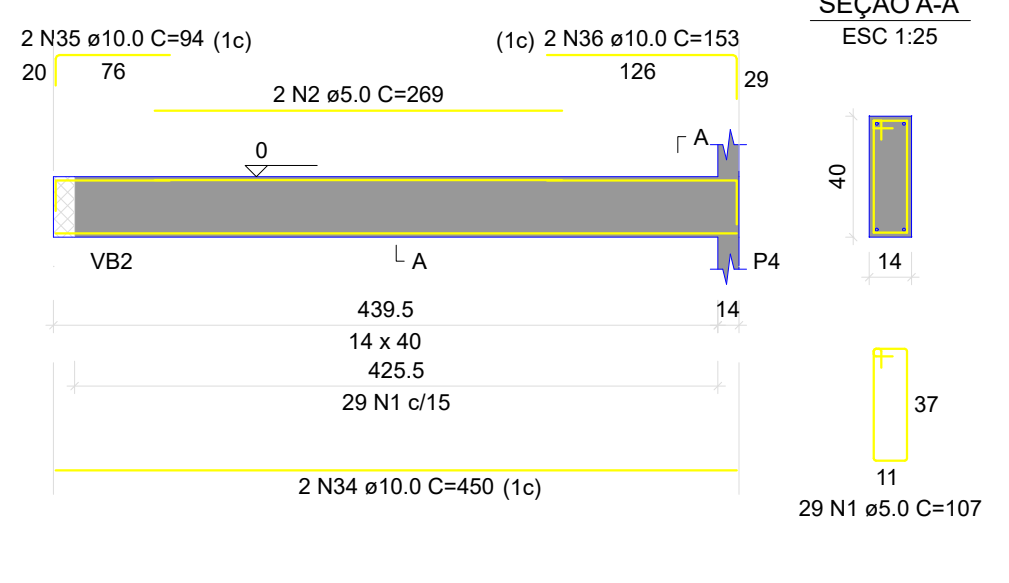
**VB10 (14 x 40)**



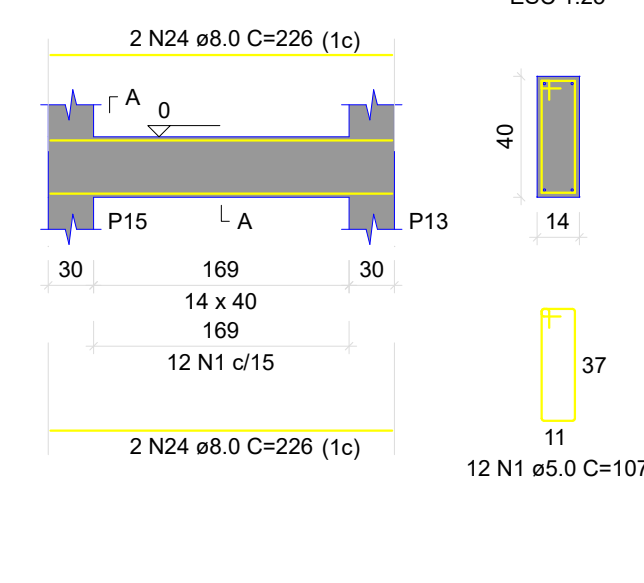
**VB11 (14 x 40)**



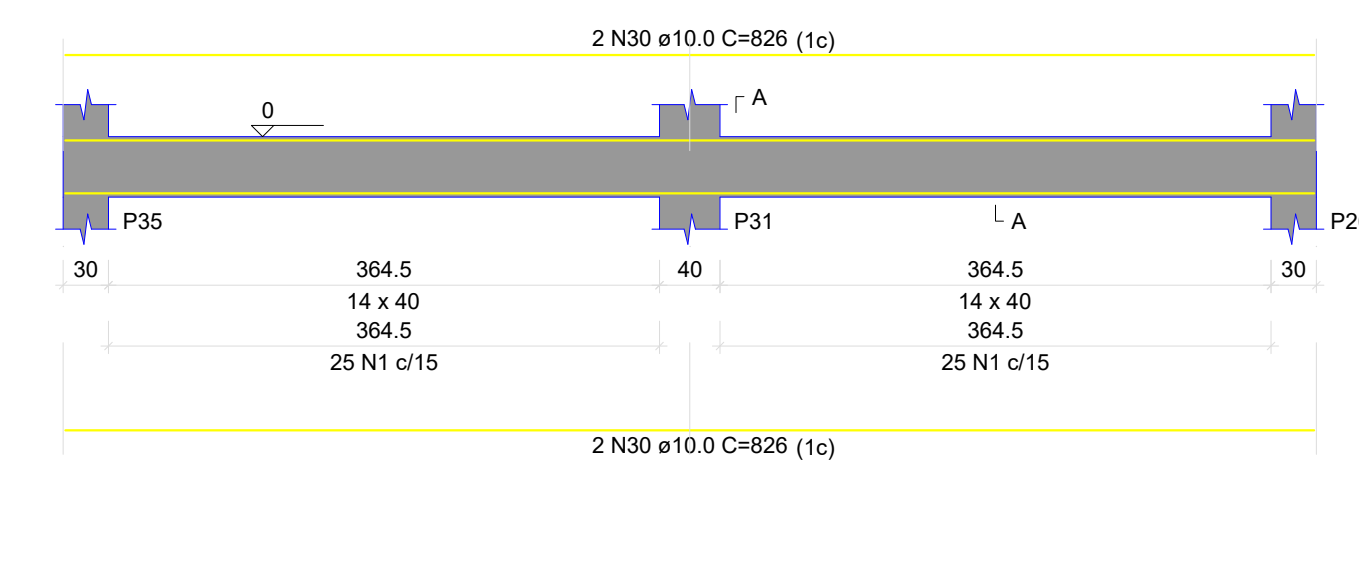
**VB12 (14 x 40)**



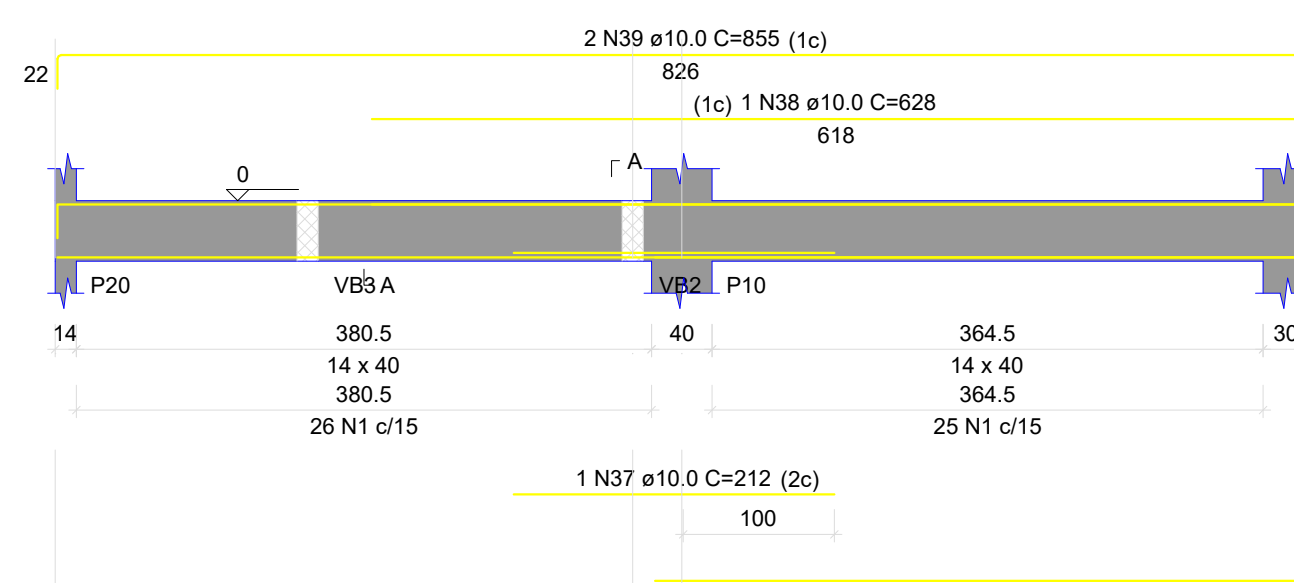
**VB13 (14 x 40)**



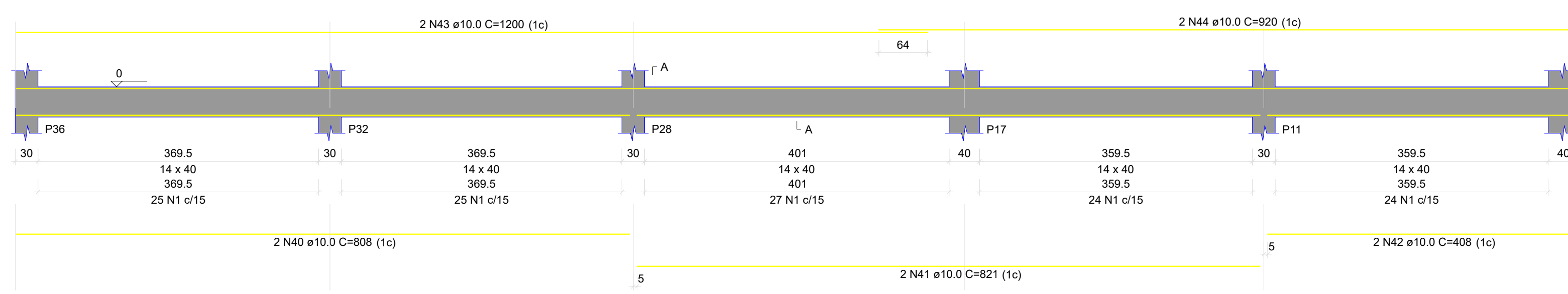
**VB14 (14 x 40)**



**VB15 (14 x 40)**



**VB16 (14 x 40)**



RELAÇÃO DO AÇO

ACO	N	DIAM (mm)	QUANT	C LÍMITE (cm)	C TOTAL (cm)
CASO	1	5.0	1019	107	109033
CASO	2	5.0	2	260	538
CASO	3	5.0	2	930	1860
CASO	4	8.0	2	926	1852
CASO	5	8.0	4	816	2484
CASO	6	8.0	2	826	1652
CASO	7	8.0	2	754	1508
CASO	8	8.0	2	656	1312
CASO	9	8.0	4	726	2904
CASO	10	8.0	4	826	3304
CASO	11	8.0	4	831	3324
CASO	12	8.0	2	826	1652
CASO	13	8.0	2	770	1540
CASO	14	8.0	2	760	1520
CASO	15	8.0	2	826	1652
CASO	16	8.0	2	816	1632
CASO	17	8.0	2	826	1652
CASO	18	8.0	1	1200	1200
CASO	19	8.0	1	380	380
CASO	20	8.0	2	1188	2376
CASO	21	8.0	2	827	1654
CASO	22	8.0	4	826	3304
CASO	23	8.0	1	573	573
CASO	24	8.0	8	226	1808
CASO	25	10.0	1	256	256
CASO	26	10.0	2	659	1318
CASO	27	10.0	1	372	372
CASO	28	10.0	3	725	2175
CASO	29	10.0	2	451	902
CASO	30	10.0	8	826	6608
CASO	31	10.0	1	218	218
CASO	32	10.0	1	618	618
CASO	33	10.0	2	846	1692
CASO	34	10.0	2	450	900
CASO	35	10.0	2	94	188
CASO	36	10.0	3	451	1353
CASO	37	10.0	1	212	212
CASO	38	10.0	1	656	656
CASO	39	10.0	2	855	1710
CASO	40	10.0	2	855	1710
CASO	41	10.0	2	851	1702
CASO	42	10.0	2	408	816
CASO	43	10.0	2	1250	2500
CASO	44	10.0	2	530	1060

RESUMO DO AÇO

ACO	DIAM (mm)	C TOTAL (cm)	QUANT + 10% (Barra)	PESO + 10% (kg)
CASO	5.0	463	43	201
CASO	8.0	2637	25	175.8
CASO	5.0	10957		165.8
<b>CASO</b>				<b>379.8</b>
<b>CASO</b>				<b>165.8</b>

Volume de concreto (C-25) = 9.24 m³  
Área de forma = 155.18 m²

CARIMBOS:



PROJETO:  
**Estruturas de Concreto Armado**

DETALHE:  
**Vigas Baldrame pav. Infraestrutura**

OBRA:  
Ampliação da escola do distrito de Boa Esperança

LOCAL:  
Distrito de Boa Esperança Sorriso/MT

FOLHA:  
**04** / 08

AUTOR DO PROJETO:  
**MARCELO DE OLIVEIRA CAMPOS**  
ENGENHEIRO CIVIL CREA - 12015891-3

VISTO:  
**EDNILSON DE LIMA OLIVEIRA**  
SECRETÁRIO DA CÍDADE

MUNICÍPIO DE SORRISO  
CNPJ 03.291.016/0001-62

DATA:  
JUL 2021

DESENHO: