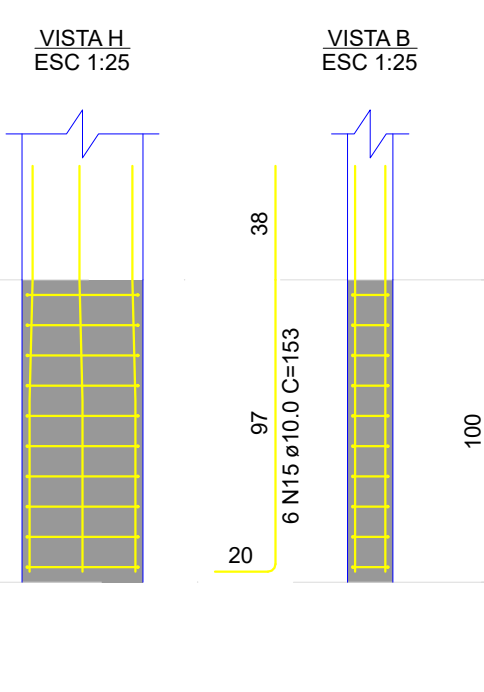
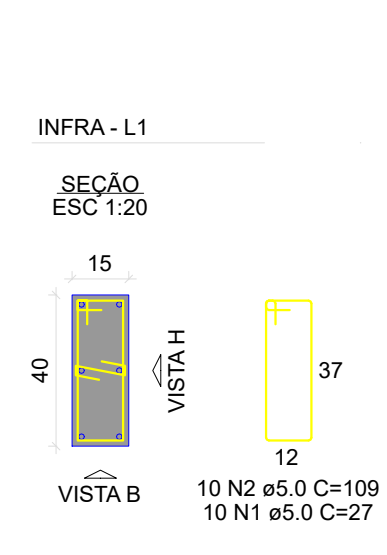
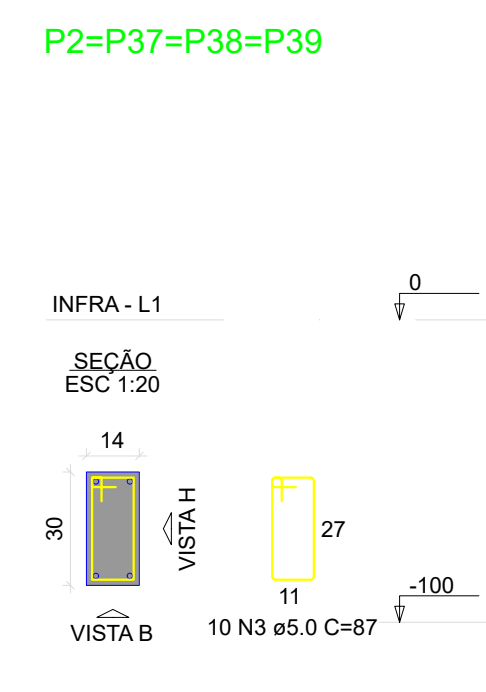
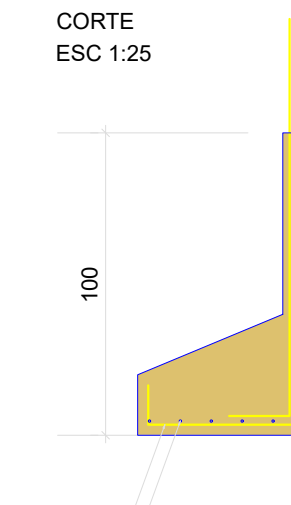
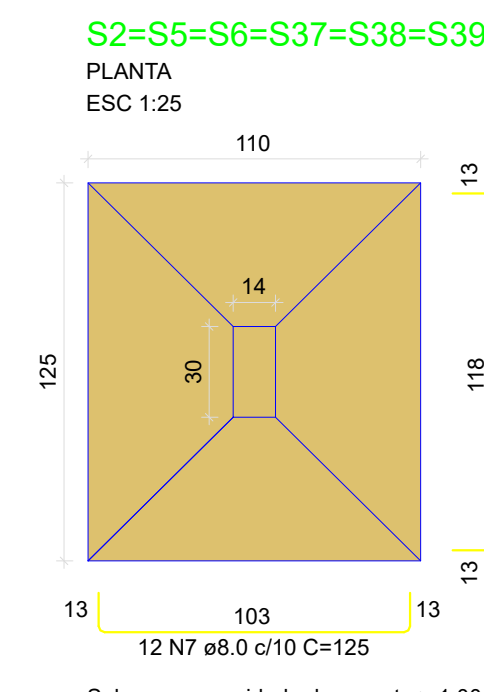
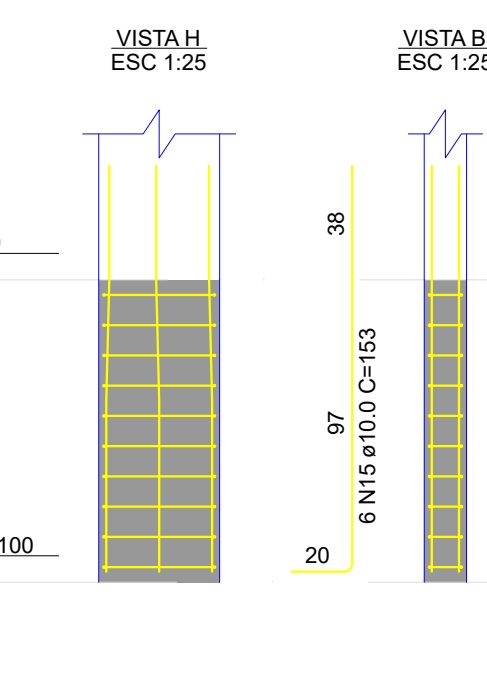
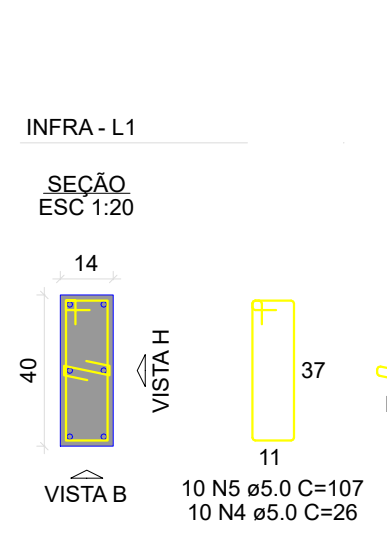


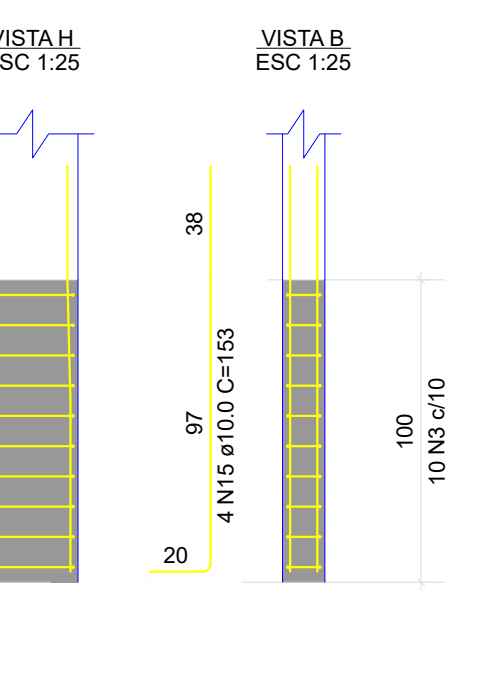
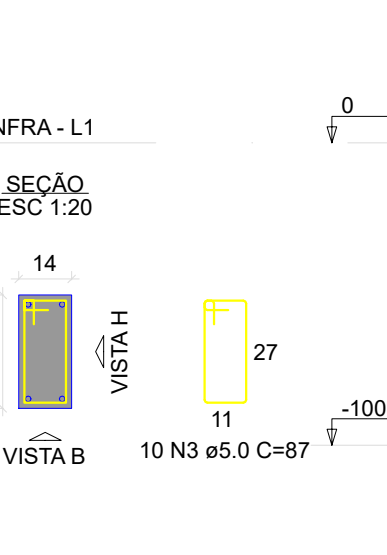
P1



P7

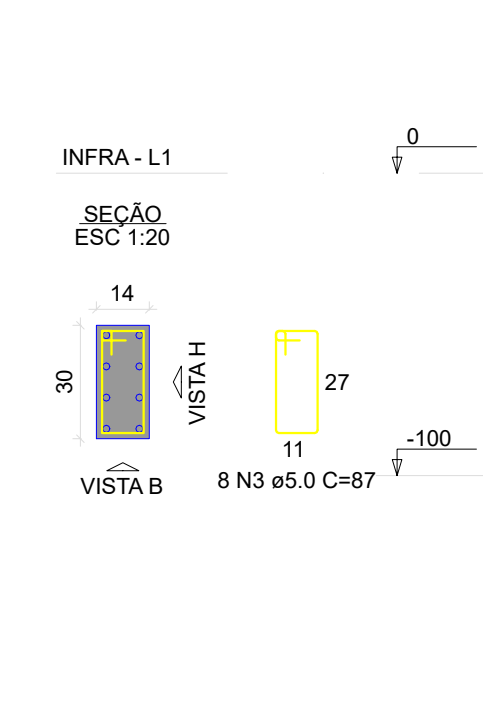
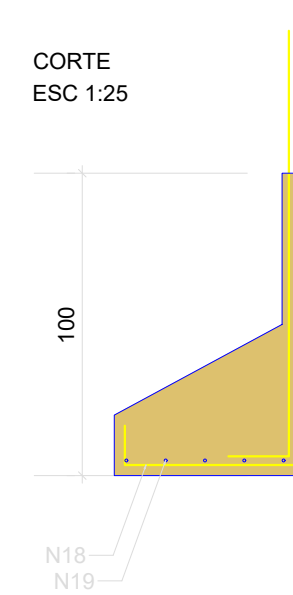
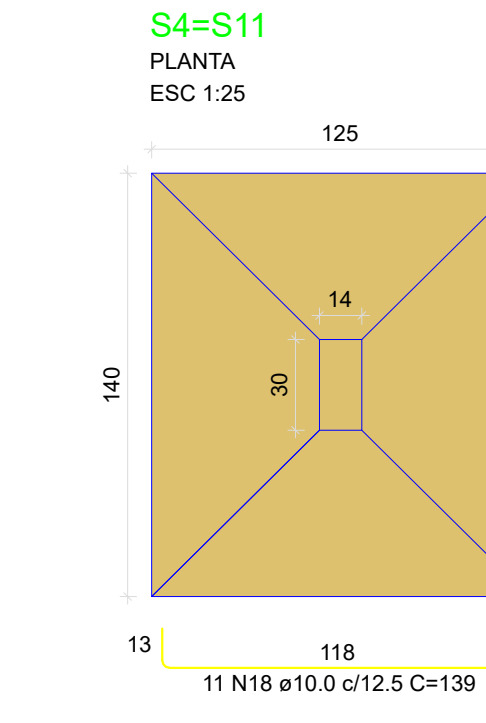
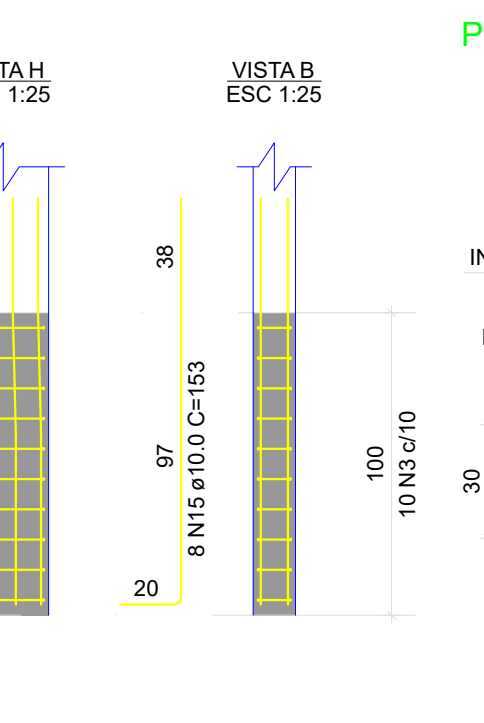
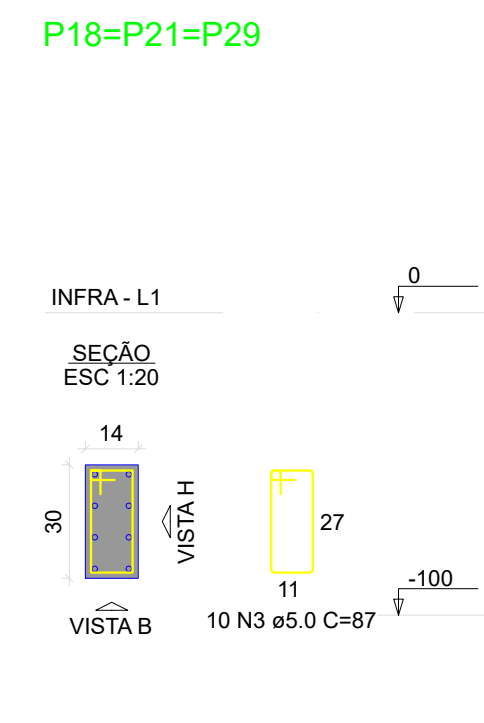
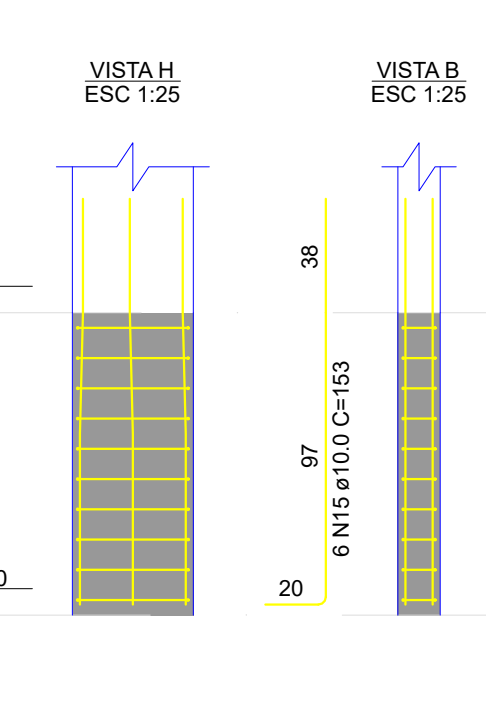
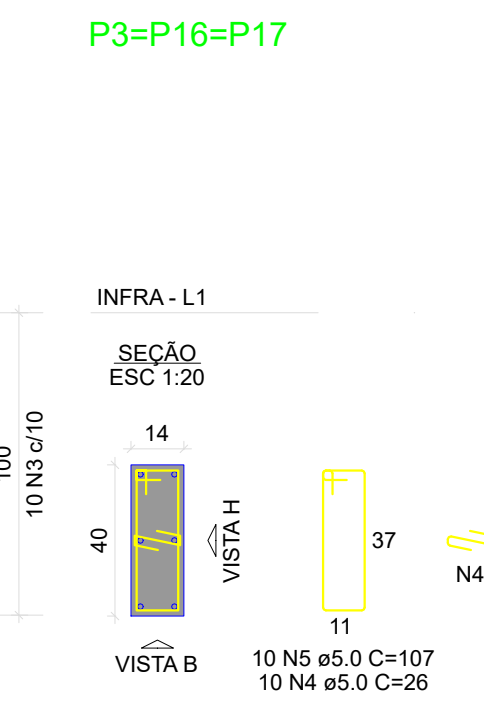
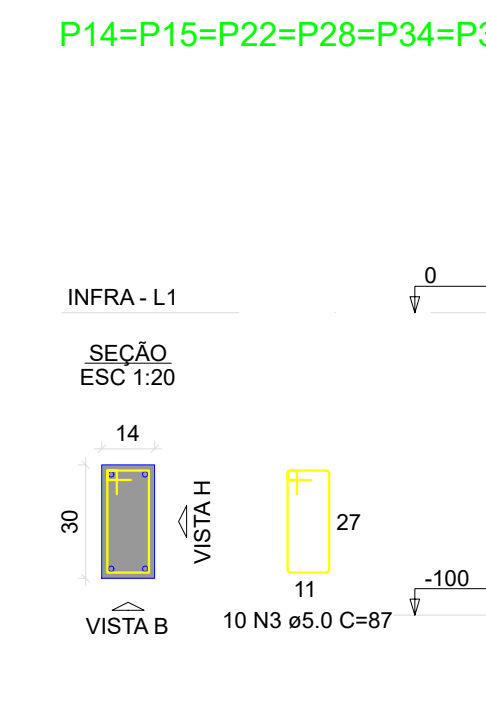
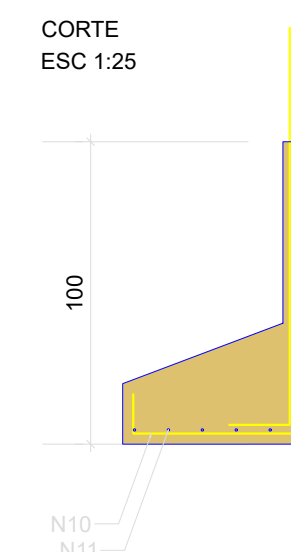


P5=P6

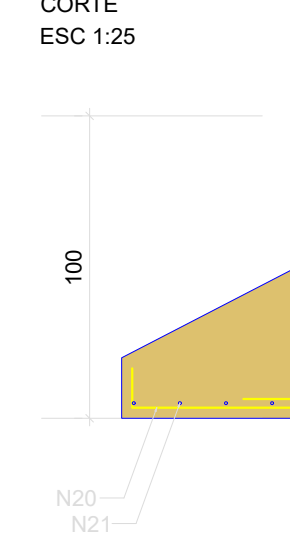
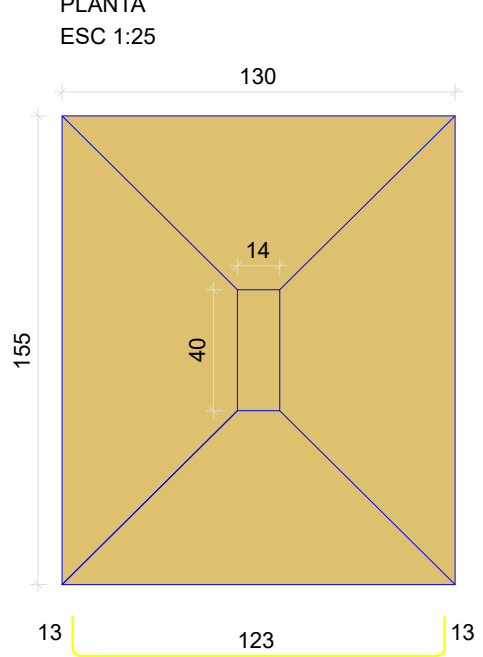


S3=S14=S15=S16=S17=S18=S21=S22=S25=S28
=S29=S34=S35
PLANTA
ESC 1:25

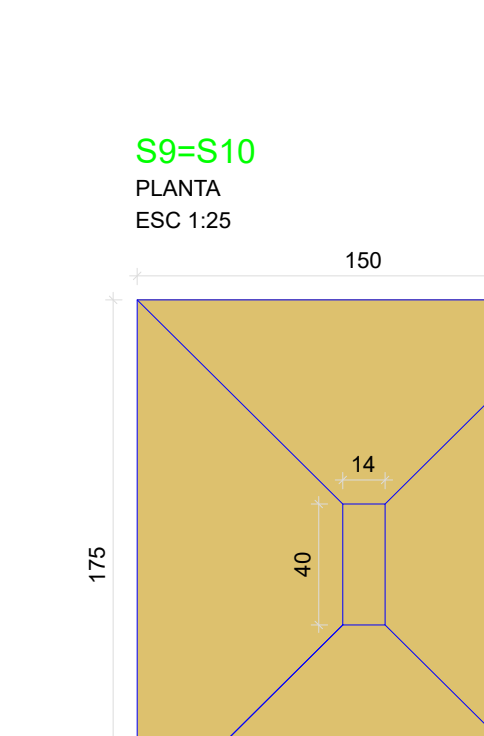
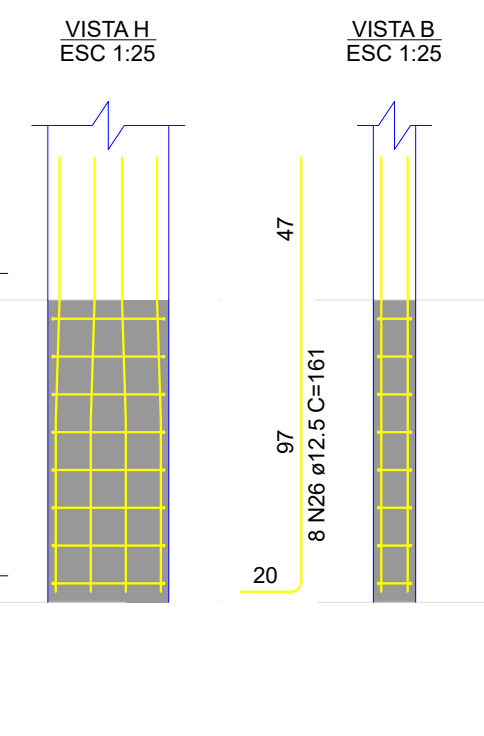
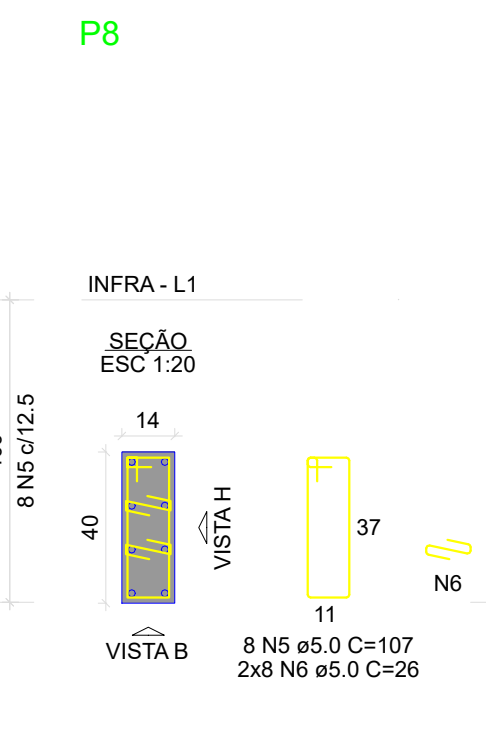
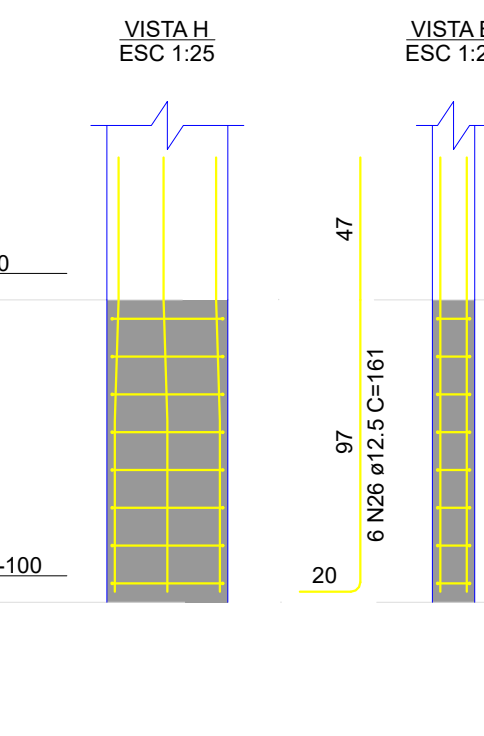
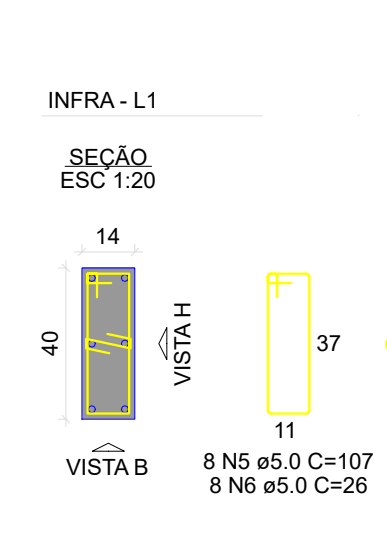
Solo com capacidade de suporte > 1.00 kgf/cm²
Solo compactado sobre a sapata
peso específico > 1600.00 kg/m³



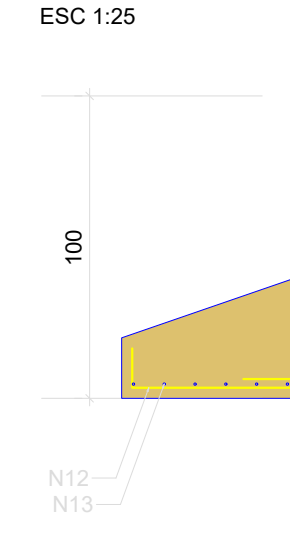
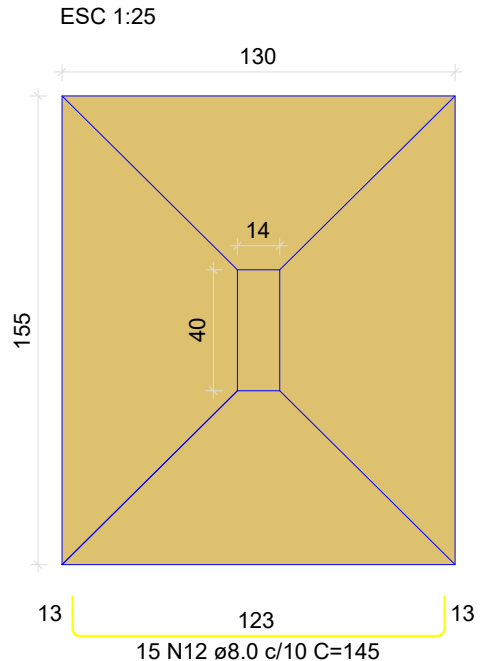
S8=S19



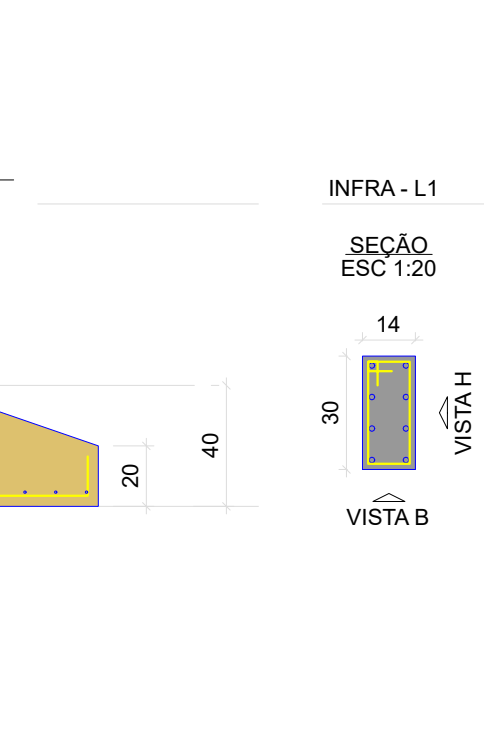
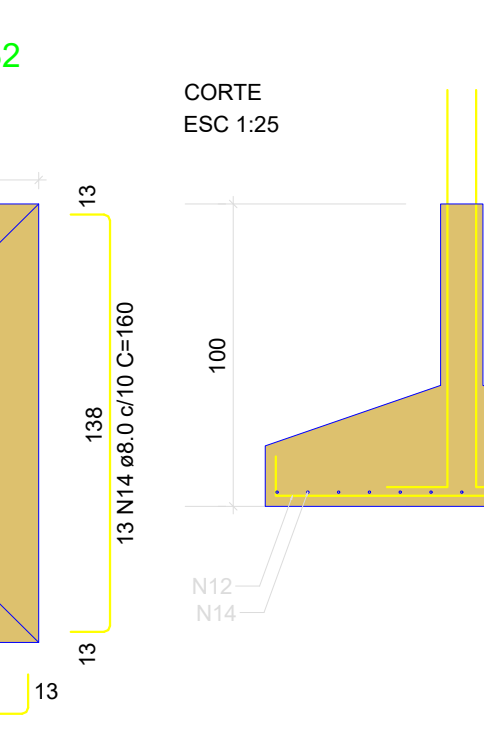
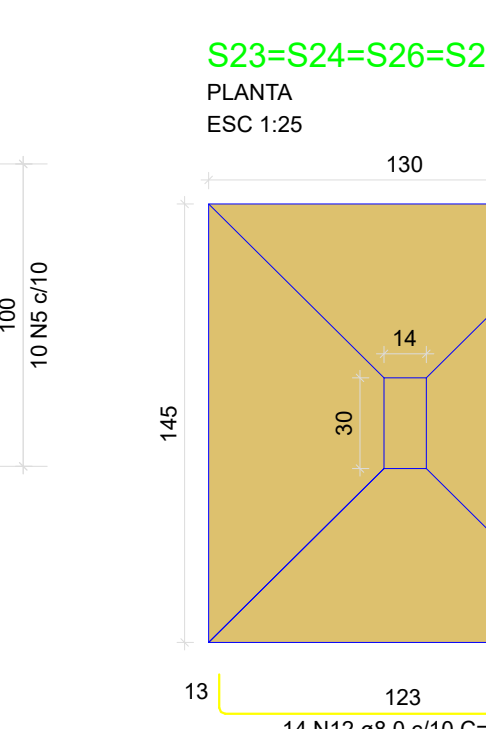
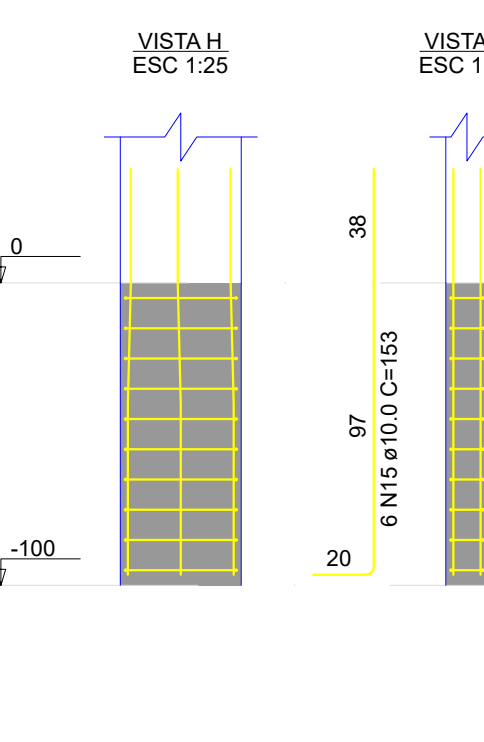
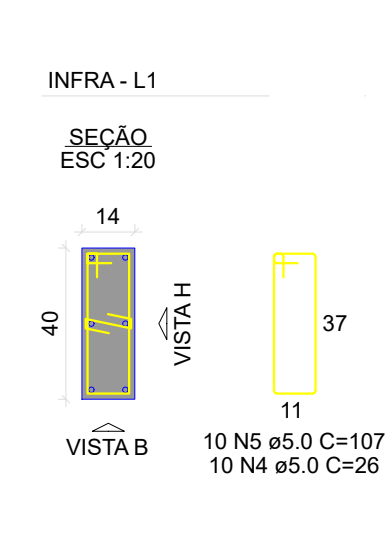
P19



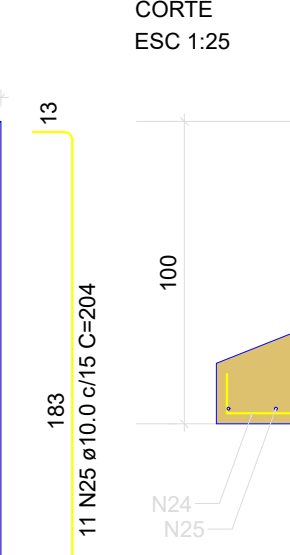
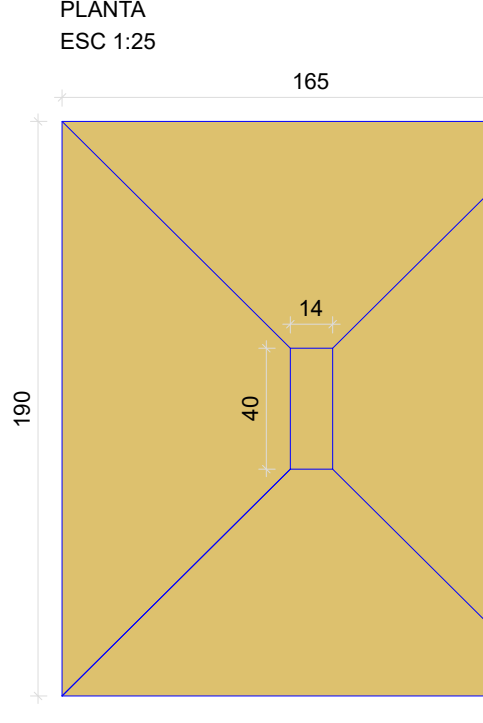
S20



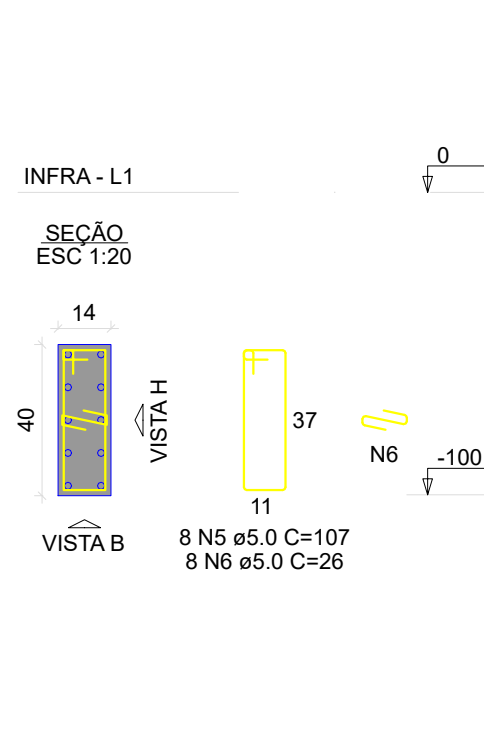
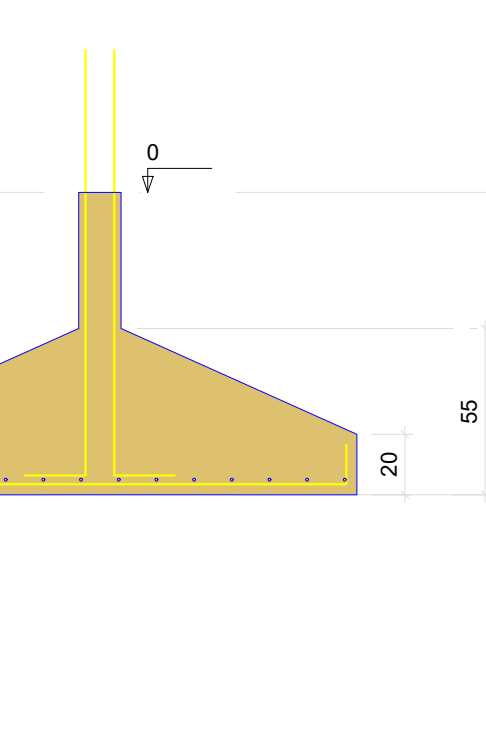
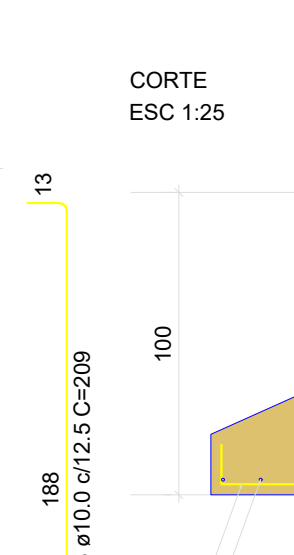
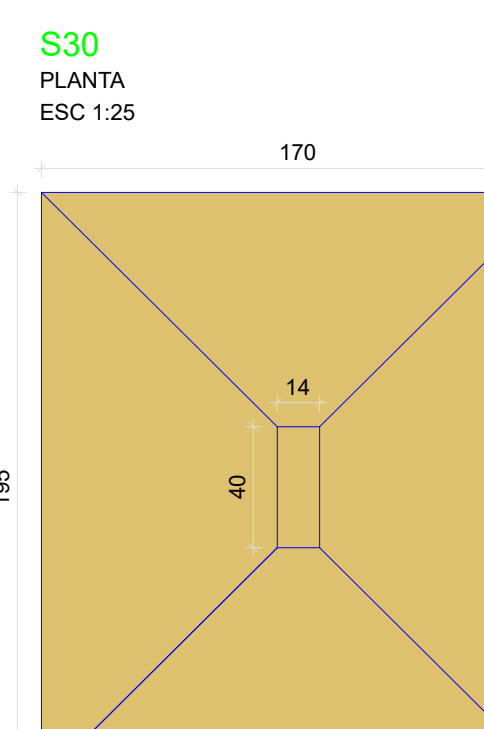
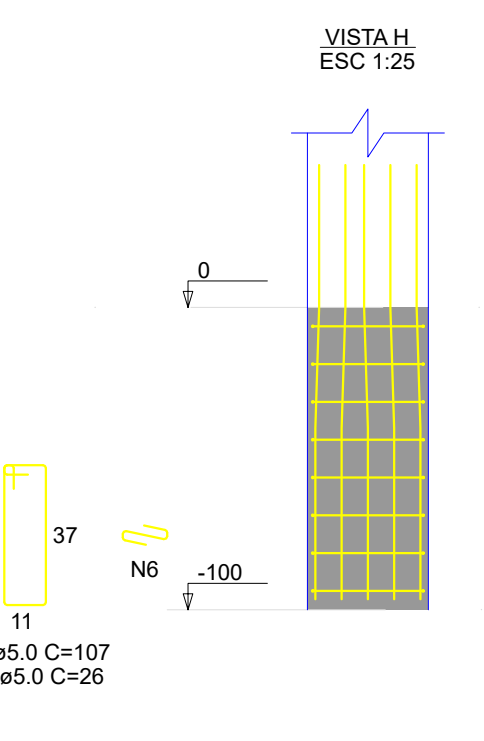
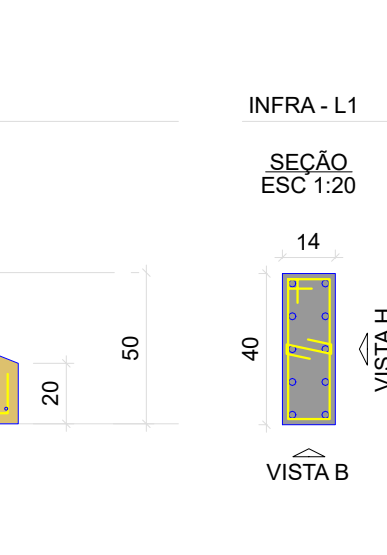
P20



S31



P31



RELAÇÃO DO AÇO

ITEM	DIAM.	QUANT.	C. TOTAL	QUANT.	C. TOTAL
CAO1	8	20	160	20	160
CAO2	8	20	160	20	160
CAO3	8	20	160	20	160
CAO4	8	20	160	20	160
CAO5	8	20	160	20	160
CAO6	8	20	160	20	160
CAO7	8	20	160	20	160
CAO8	8	20	160	20	160
CAO9	8	20	160	20	160
CAO10	8	20	160	20	160
CAO11	8	20	160	20	160
CAO12	8	20	160	20	160
CAO13	8	20	160	20	160
CAO14	8	20	160	20	160
CAO15	8	20	160	20	160
CAO16	8	20	160	20	160
CAO17	8	20	160	20	160
CAO18	8	20	160	20	160
CAO19	8	20	160	20	160
CAO20	8	20	160	20	160

RESUMO DO AÇO

ITEM	DIAM.	C. TOTAL	QUANT. (Kg)	QUANT. (m³)	PESO (Kg)
CAO1	8	160	20	160	160
CAO2	8	160	20	160	160
CAO3	8	160	20	160	160
CAO4	8	160	20	160	160
CAO5	8	160	20	160	160
CAO6	8	160	20	160	160
CAO7	8	160	20	160	160
CAO8	8	160	20	160	160
CAO9	8	160	20	160	160
CAO10	8	160	20	160	160
CAO11	8	160	20	160	160
CAO12	8	160	20	160	160
CAO13	8	160	20	160	160
CAO14	8	160	20	160	160
CAO15	8	160	20	160	160
CAO16	8	160	20	160	160
CAO17	8	160	20	160	160
CAO18	8	160	20	160	160
CAO19	8	160	20	160	160
CAO20	8	160	20	160	160

Volume de concreto (C25) = 21.12 m³
Área de forma = 77.08 m²

CARIMBO:

PREFEITURA DE SORRISO
ESTADO DE MATO GROSSO

PROJETO:
Estruturas de Concreto Armado

DETAHES:
Fundações e aaranques

OBRA:
Ampliação da escola do distrito de Boa Esperança

LOCAL:
Distrito de Boa Esperança
Soriso/MT

AUTOR DO PROJETO:
MARCELO DE OLIVEIRA CAMPOS
INGENHEIRO CIVIL CREA - 125287/3

VISOR:
EDNILSON DE LIMA OLIVEIRA
BOLETERIA DA CONDAR

MUNICÍPIO DE SORRISO
CNPJ: 08.029.016/0001-62

DATA:
JUL. 2021

DESENHO:

03/**08**