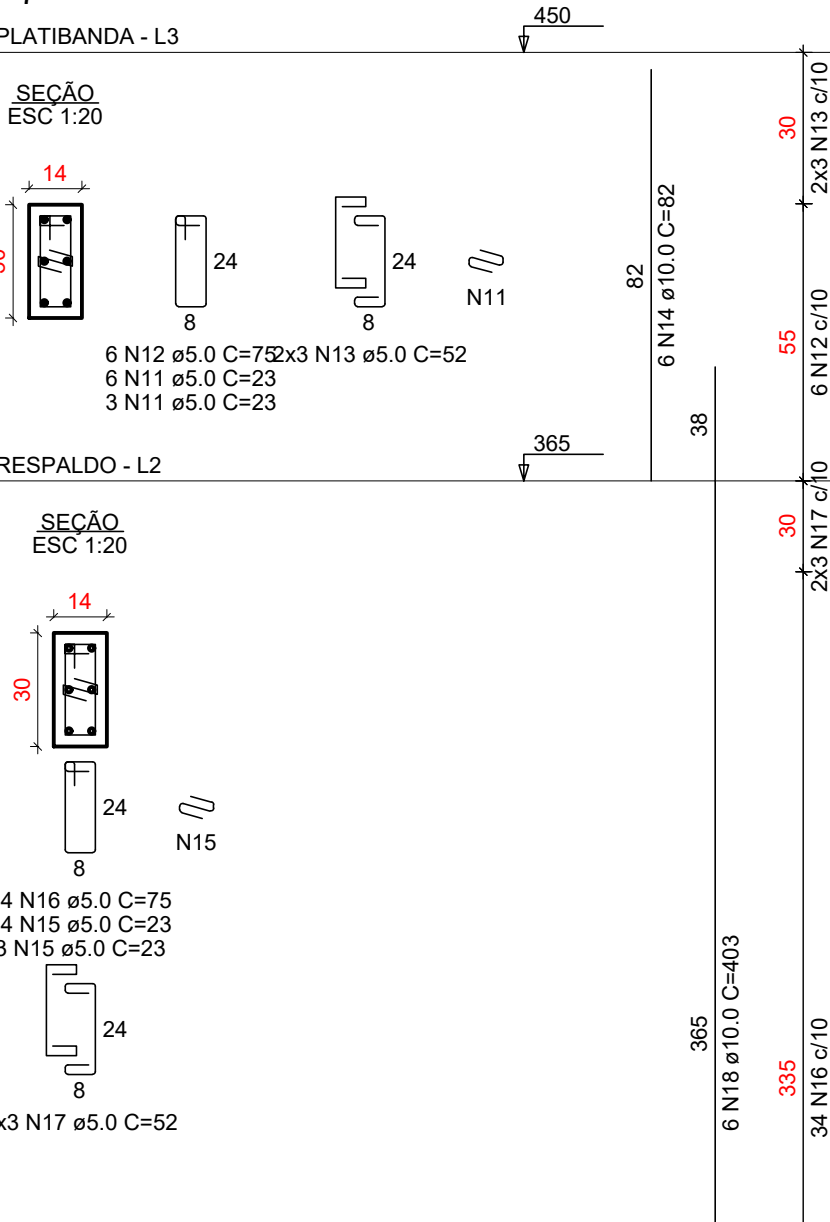
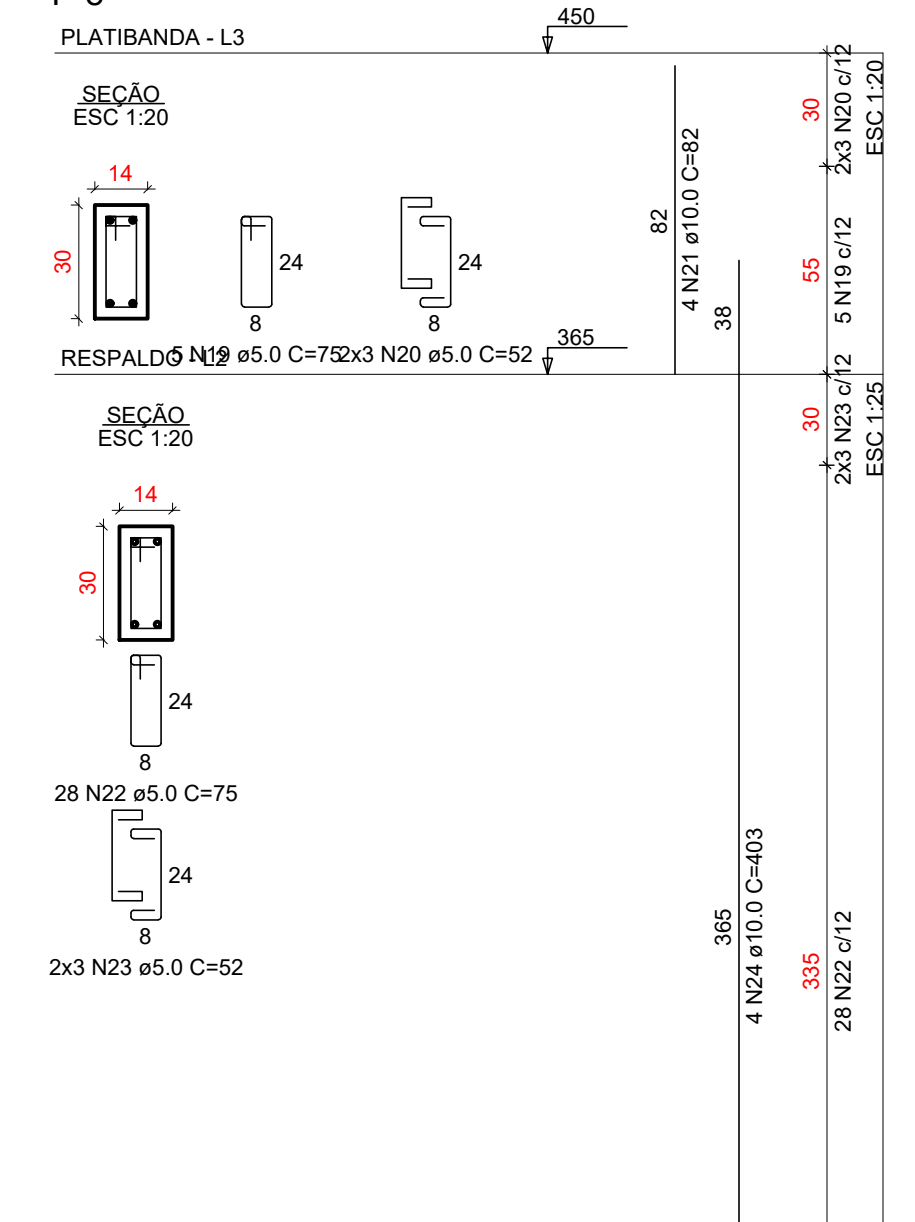
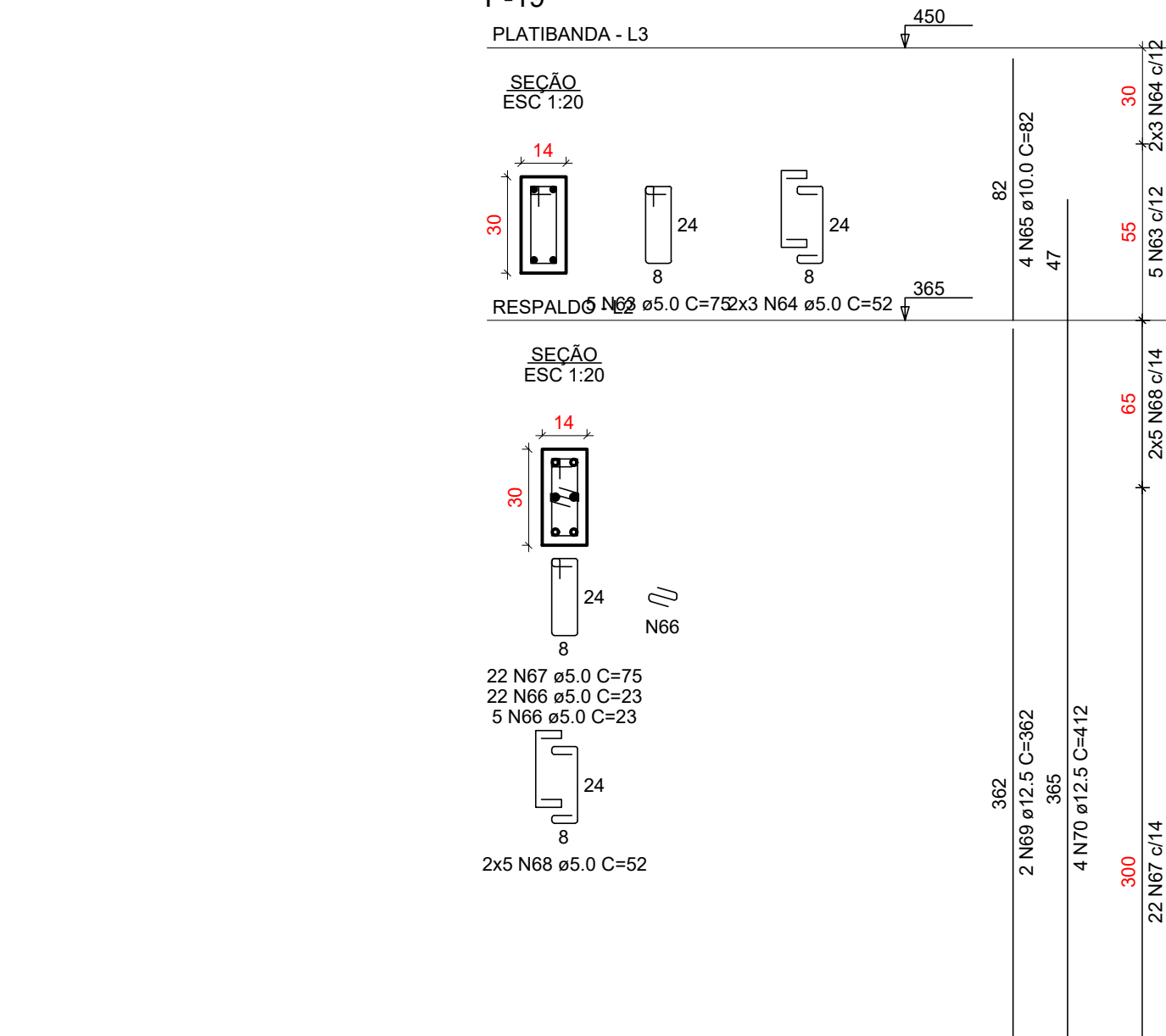
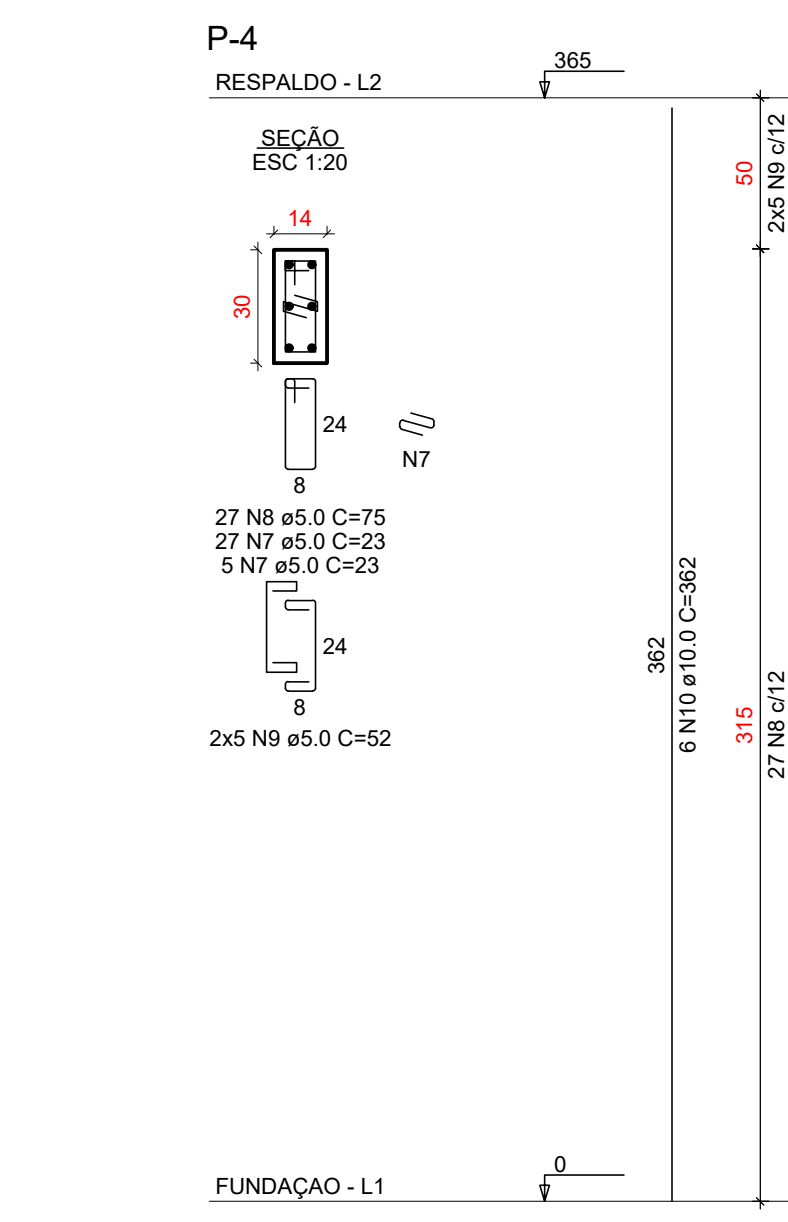
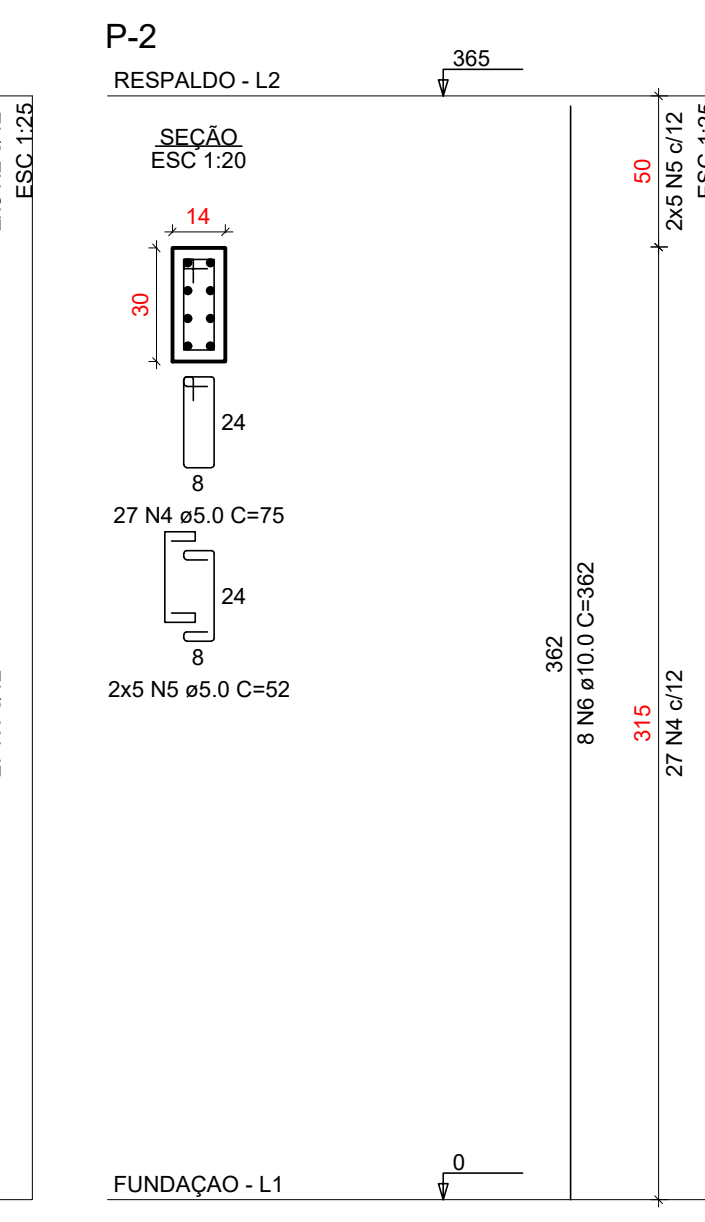
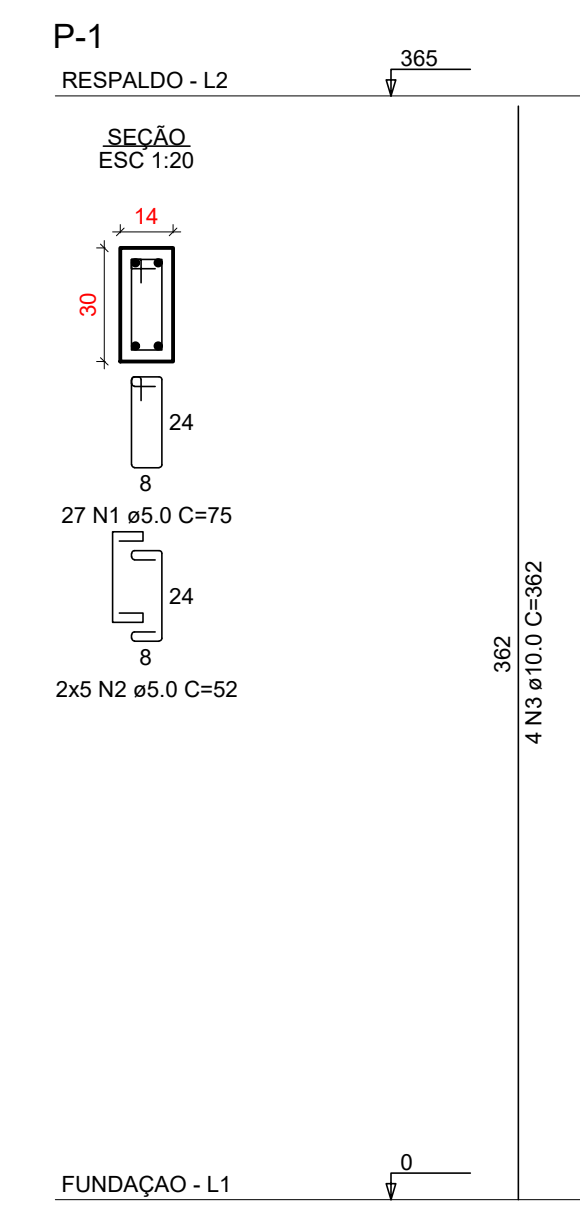


RELAÇÃO DO AÇO

ELEMENTO	AÇO	N	DIAM (mm)	QUANT	C.UNIT (cm)	C.TOTAL (cm)
P-1-L2	CA60	1	5.0	27	75	2025
P-1-L2	CA60	3	10.0	4	362	1086
P-2-L2	CA50	4	5.0	27	75	2025
P-2-L2	CA60	5	5.0	10	52	520
P-2-L2	CA50	6	10.0	8	362	2896
P-2-L2	CA60	7	5.0	32	75	2400
P-2-L2	CA60	8	5.0	27	75	2025
P-2-L2	CA60	9	5.0	10	52	520
P-2-L2	CA50	10	10.0	6	362	2172
P-2-L2	CA60	11	5.0	9	23	207
P-2-L2	CA60	12	5.0	6	75	450
P-2-L2	CA60	13	5.0	6	52	312
P-2-L2	CA50	14	10.0	6	82	492
P-2-L2	CA60	15	5.0	37	23	851
P-2-L2	CA60	16	5.0	34	75	2550
P-2-L2	CA60	17	5.0	6	52	312
P-2-L2	CA50	18	10.0	6	403	2418
P-2-L2	CA60	19	5.0	5	75	375
P-2-L2	CA60	20	5.0	6	52	312
P-2-L2	CA50	21	10.0	4	82	328
P-2-L2	CA60	22	5.0	28	75	2100
P-2-L2	CA60	23	5.0	6	52	312
P-2-L2	CA50	24	10.0	4	403	1612
P-2-L2	CA60	25	5.0	6	23	184
P-2-L2	CA60	26	5.0	5	115	575
P-2-L2	CA60	27	5.0	72	72	432
P-2-L2	CA50	28	10.0	6	82	492
P-2-L2	CA60	29	5.0	93	23	2139
P-2-L2	CA60	30	5.0	28	115	3220
P-2-L2	CA60	31	5.0	6	72	432
P-2-L2	CA60	32	10.0	6	362	1448
P-2-L2	CA50	33	10.0	6	403	2418
P-2-L2	CA60	34	5.0	7	23	161
P-2-L2	CA60	35	5.0	4	95	380
P-2-L2	CA60	36	5.0	6	62	372
P-2-L2	CA50	37	12.5	6	82	492
P-2-L2	CA60	38	5.0	54	23	1242
P-2-L2	CA60	39	5.0	24	95	2280
P-2-L2	CA60	40	5.0	6	62	372
P-2-L2	CA50	41	12.5	2	362	724
P-2-L2	CA50	42	12.5	6	412	2472
P-2-L2	CA60	43	5.0	6	75	450
P-2-L2	CA60	44	5.0	5	95	475
P-2-L2	CA60	45	5.0	6	372	372
P-2-L2	CA50	46	10.0	6	82	492
P-2-L2	CA60	47	5.0	31	23	713
P-2-L2	CA60	48	5.0	28	260	2860
P-2-L2	CA60	49	5.0	6	62	372
P-2-L2	CA50	50	10.0	4	403	1612
P-2-L2	CA60	51	5.0	22	75	1650
P-2-L2	CA60	52	5.0	4	52	208
P-2-L2	CA50	53	10.0	4	277	1108
P-2-L2	CA60	54	5.0	22	75	1650
P-2-L2	CA60	55	10.0	4	42	208
P-2-L2	CA60	56	10.0	4	277	1108
P-2-L2	CA60	57	5.0	22	75	1650
P-2-L2	CA60	58	5.0	4	52	208
P-2-L2	CA50	59	10.0	4	277	1108
P-2-L2	CA60	60	5.0	22	77	1694
P-2-L2	CA60	61	5.0	4	54	216
P-2-L2	CA50	62	10.0	4	277	1108
P-2-L2	CA60	63	5.0	5	75	375
P-2-L2	CA60	64	5.0	6	52	312
P-2-L2	CA50	65	10.0	4	82	328
P-2-L2	CA60	66	5.0	27	23	621
P-2-L2	CA50	67	5.0	22	75	1650
P-2-L2	CA60	68	5.0	10	52	520
P-2-L2	CA50	69	12.5	2	362	724
P-2-L2	CA50	70	12.5	4	412	1648
P-2-L2	CA60	71	5.0	13	23	299
P-2-L2	CA60	72	5.0	4	75	300
P-2-L2	CA60	73	5.0	18	52	936
P-2-L2	CA60	74	12.5	6	177	1062
P-2-L2	CA60	75	5.0	24	75	1800
P-2-L2	CA60	76	5.0	6	52	312
P-2-L2	CA50	77	12.5	2	362	724
P-2-L2	CA60	78	12.5	6	412	2472
P-2-L2	CA60	79	5.0	16	23	368
P-2-L2	CA60	80	5.0	13	95	1235
P-2-L2	CA60	81	5.0	6	62	372
P-2-L2	CA50	82	10.0	6	177	1062
P-2-L2	CA60	83	5.0	31	23	713
P-2-L2	CA60	84	5.0	25	95	2375
P-2-L2	CA60	85	5.0	12	62	744
P-2-L2	CA50	86	10.0	6	403	2418
P-2-L2	CA60	87	5.0	14	23	322
P-2-L2	CA60	88	5.0	11	115	1265
P-2-L2	CA60	89	5.0	6	72	432
P-2-L2	CA50	90	12.5	6	177	1062
P-2-L2	CA60	91	5.0	27	23	621
P-2-L2	CA60	92	5.0	22	115	2530
P-2-L2	CA60	93	5.0	10	72	720
P-2-L2	CA50	94	12.5	6	412	2472
P-2-L2	CA60	95	5.0	13	75	975
P-2-L2	CA60	96	5.0	6	52	312
P-2-L2	CA50	97	10.0	4	177	708

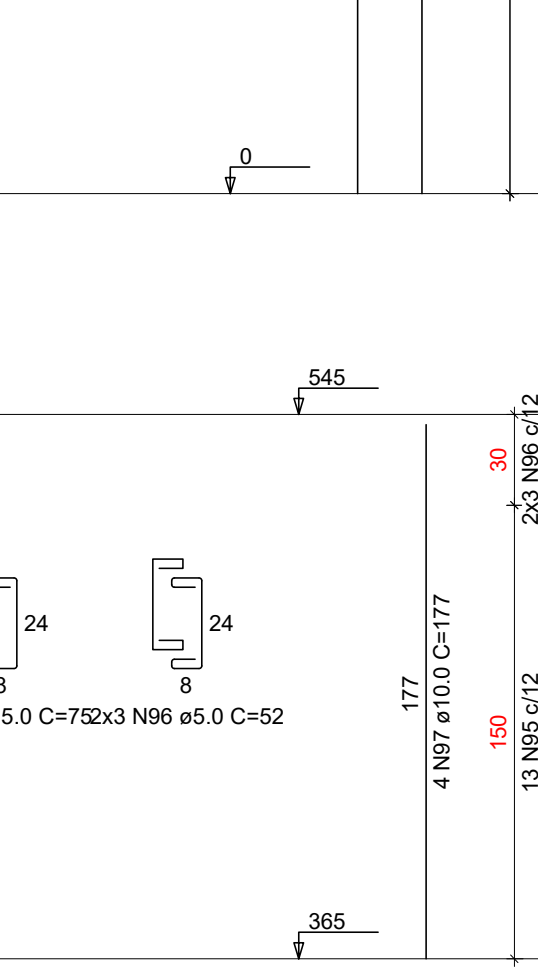
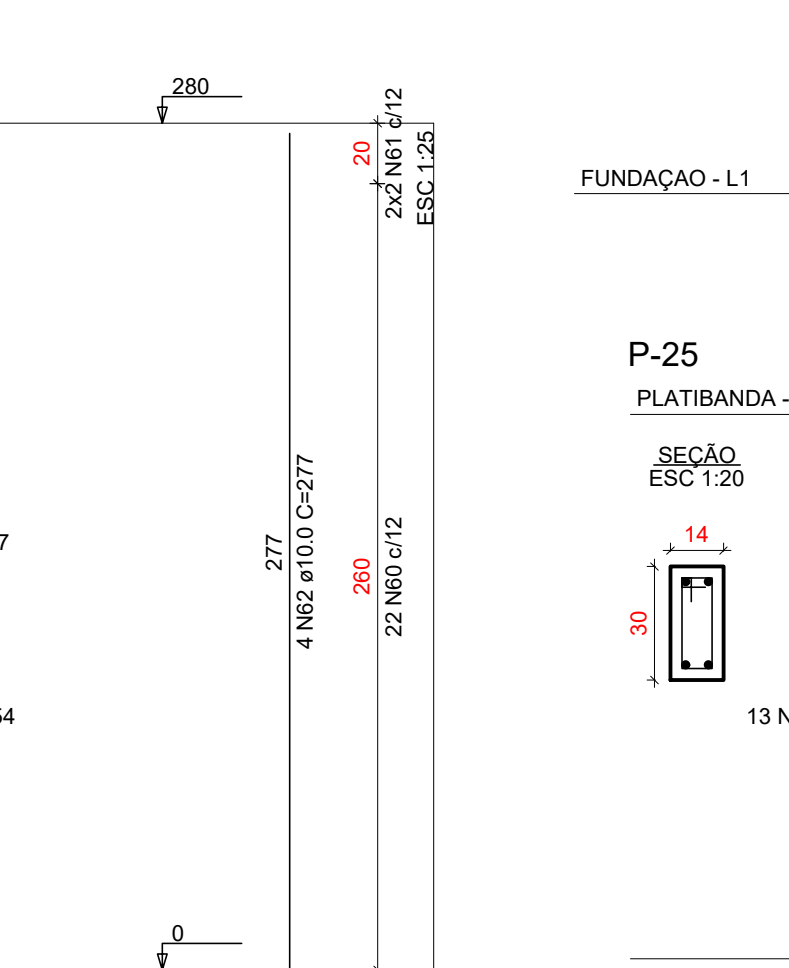
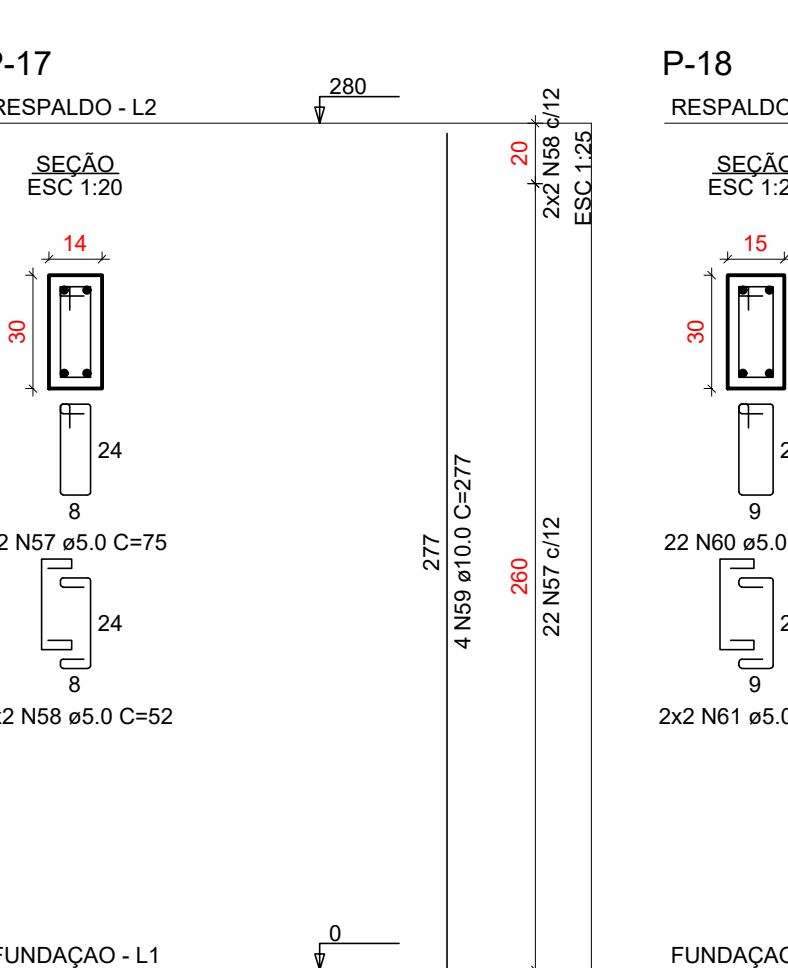
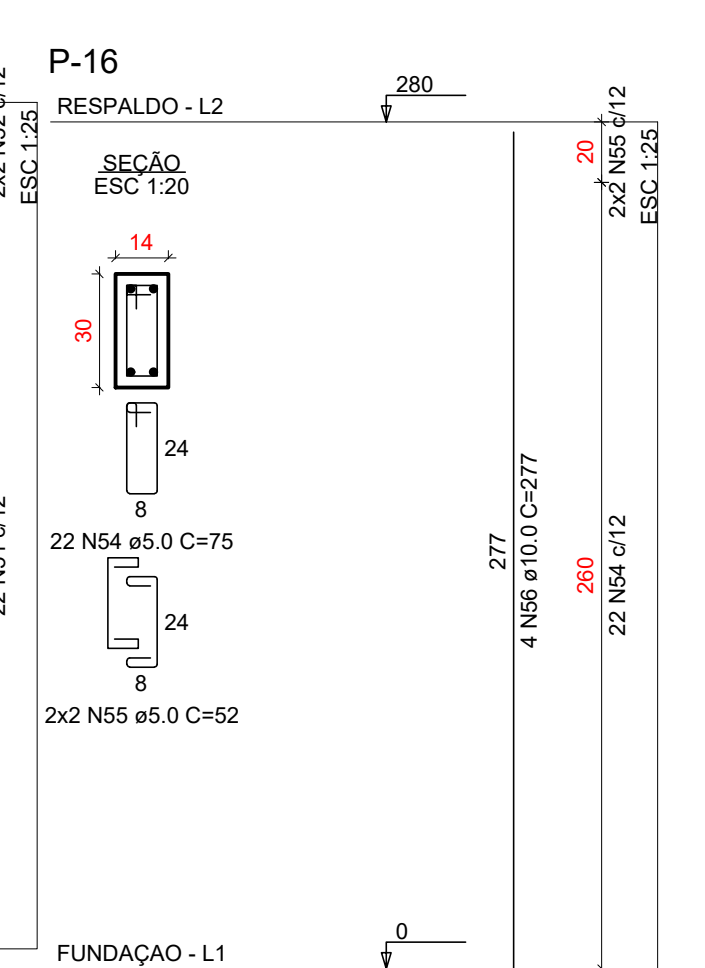
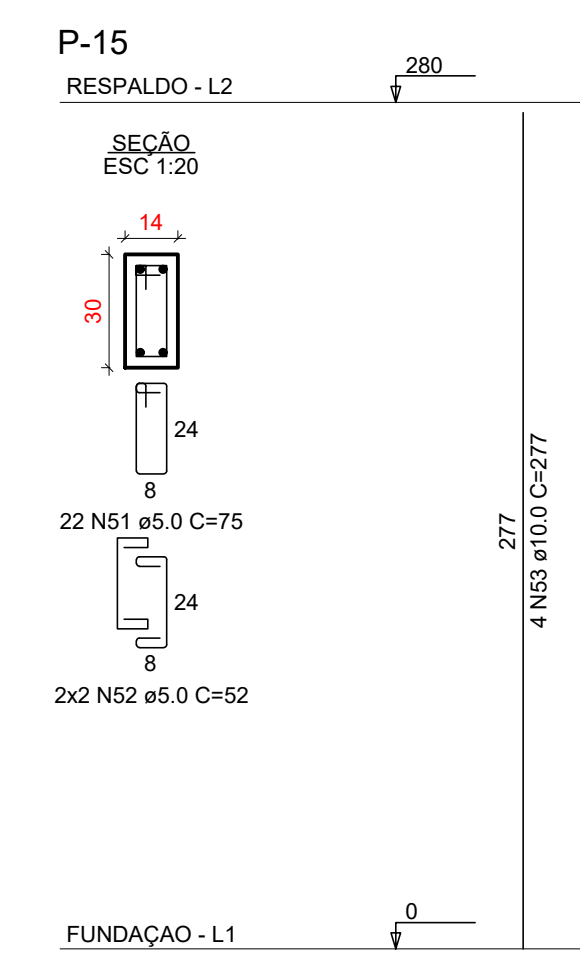


02 PROJETO ESTRUTURAL EM 3D
 COMPATIBILIZADO COM COMPLEMENTARES
 PARA VIZUALIZAR: CAMERA DO CELULAR
 OU APP LECTOR DE QR CODE



RESUMO DO AÇO

AÇO	DIAM (mm)	C.TOTAL (m)	QUANT + 10% (Barras)	UNIT	PESO + 10% (kg)
CA50	10.0	275.8	26	12 m	187.1
CA60	12.5	138.5	13	12 m	146.8
CA60	5.0	603.1	-	rolo (170 kg)	102.3
PESO TOTAL (kg)					
CA50					333.8
CA60					102.3
Volume de concreto (C-25) = 3.32 m³					
Área de forma = 66.15 m²					



CARIMBOS:



Prefeitura Municipal de Sorriso
 ESTADO DE MATO GROSSO
 Gestão 2017/2020

OBRA: CENTRO DE REGULAÇÃO

PROJETO: ESTRUTURAL

DETALHES: PLANTA DETALHAMENTO PILARES EM PRUMADA

ENDEREÇO: Rua: Alta Floresta
 Lote: 02
 Equipamento Comunitário A2

FOLHA: 01/01

RESPONSÁVEL TÉCNICO: Silvia Romfim
 Engenheira Civil CREA - MT 026160

VISTO: Ednilson de Lima Oliveira
 Secretário de cidade

ÁREAS: ÁREA DO LOTE 270m²
 ÁREA PARA CALCULO ESTRUTURAL 218,78m²

PROPRIETÁRIO: Prefeitura Municipal de Sorriso
 CNPJ: 03.239.076/0001-62

DATA: Outubro / 2021
 ESCALA: INDICADAS
 DESENHO: -
 ARQUIVO: REV.001